

T8N R9W SEC 7DC WM  
CLATSOP COUNTY

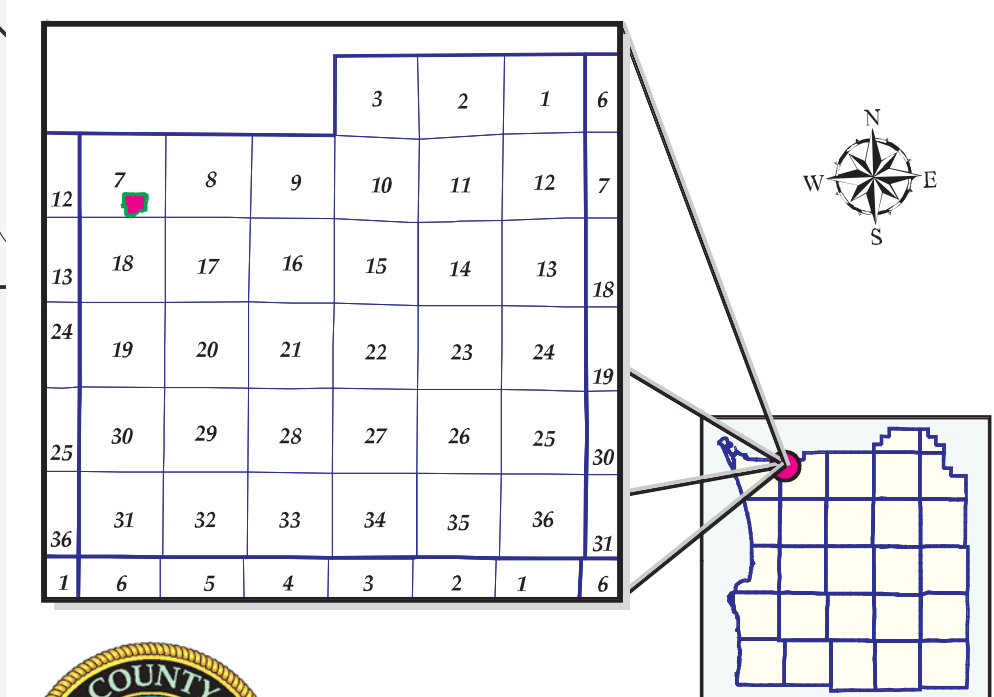
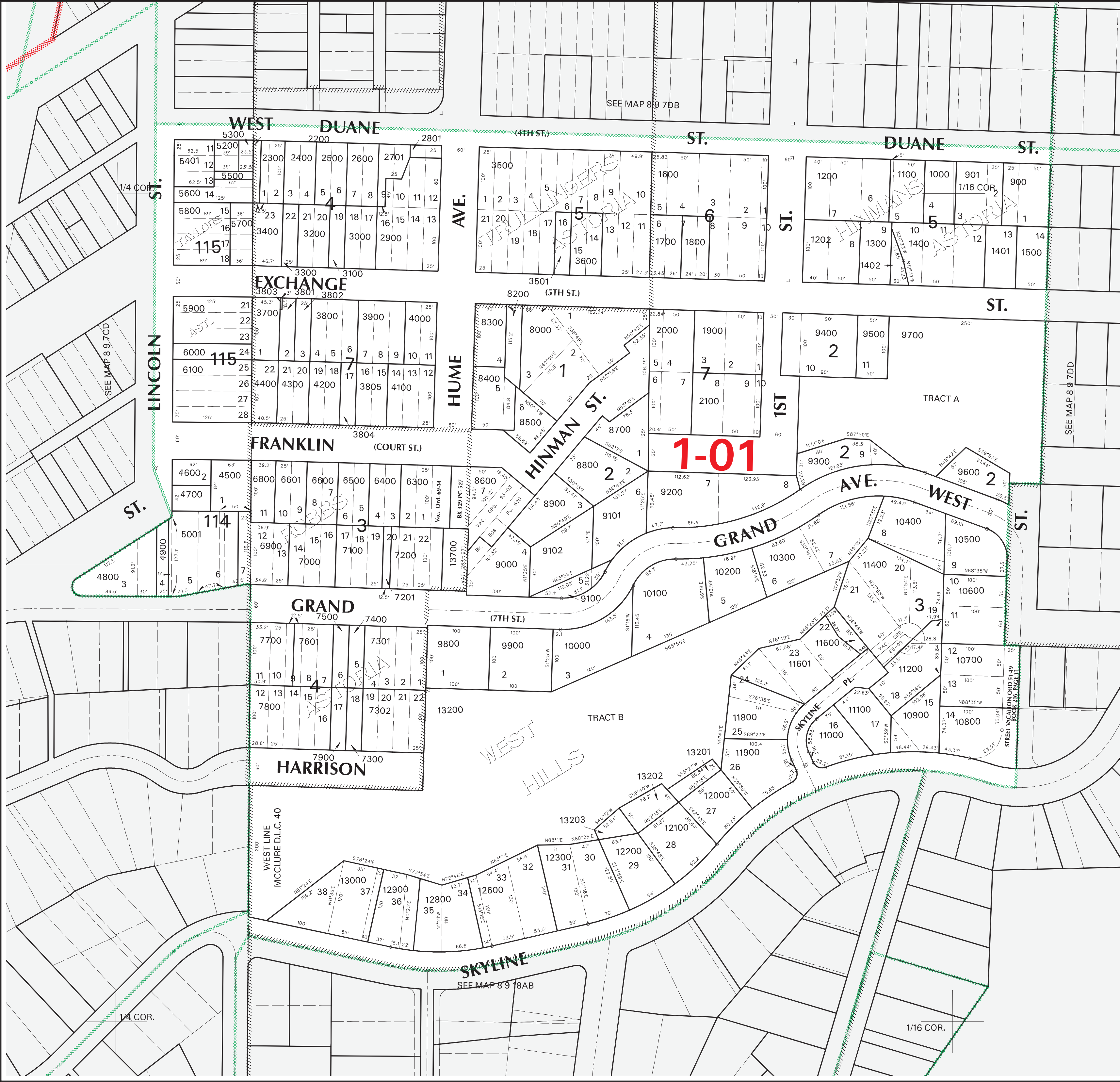
Scale 1:1200



NAD 1983/91 HARN StatePlane Oregon North FIPS 3601 Int'l Feet

Cancelled  
Accounts

- 100
- 101
- 102
- 103
- 10301
- 10302
- 10901
- 11300
- 11500
- 11700
- 1201
- 12400
- 12500
- 12700
- 13100
- 13300
- 13500
- 13600
- 1800
- 200
- 2700
- 2800
- 300
- 400
- 4901
- 500
- 5000
- 5100
- 5400
- 600
- 6001
- 6200
- 6700
- 6900
- 700
- 7600
- 800
- 8100
- 8201
- 8501
- 8901
- 9001
- 9002



This map was produced for assessment purposes only using Clatsop County data. The data is maintained by Clatsop County to support its governmental activities. Clatsop County is not responsible for any map errors, possible misuse, or misinterpretation.

December 28, 2017

8.9.7DC