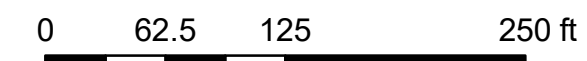
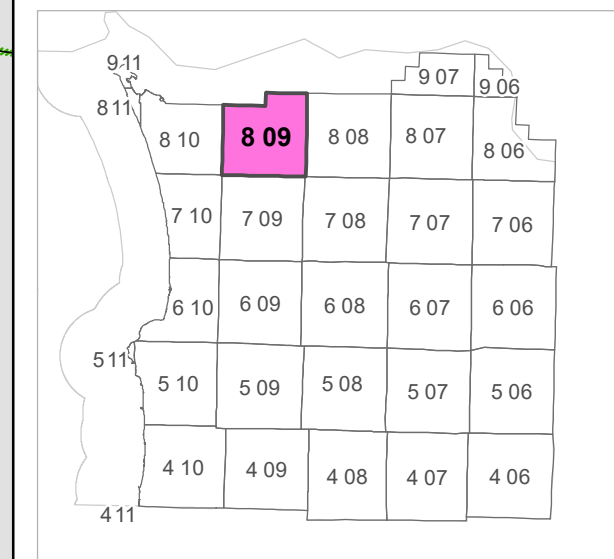


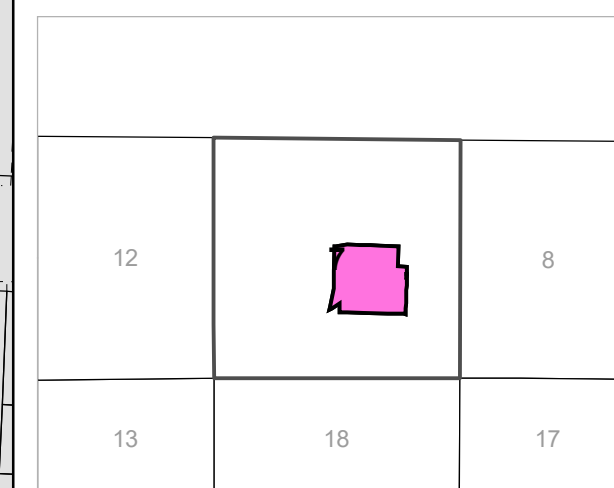
8 09 07 DB
 CLATSOP COUNTY
 NW 1/4 SE 1/4 SEC.7 T8N R9W WM



Scale 1:1,200



			3	2	1
7	8	9	10	11	12
18	17	16	15	14	13
19	20	21	22	23	24
30	29	28	27	26	25
31	32	33	34	35	36



CANCELLED TAXLOT NUMBERS

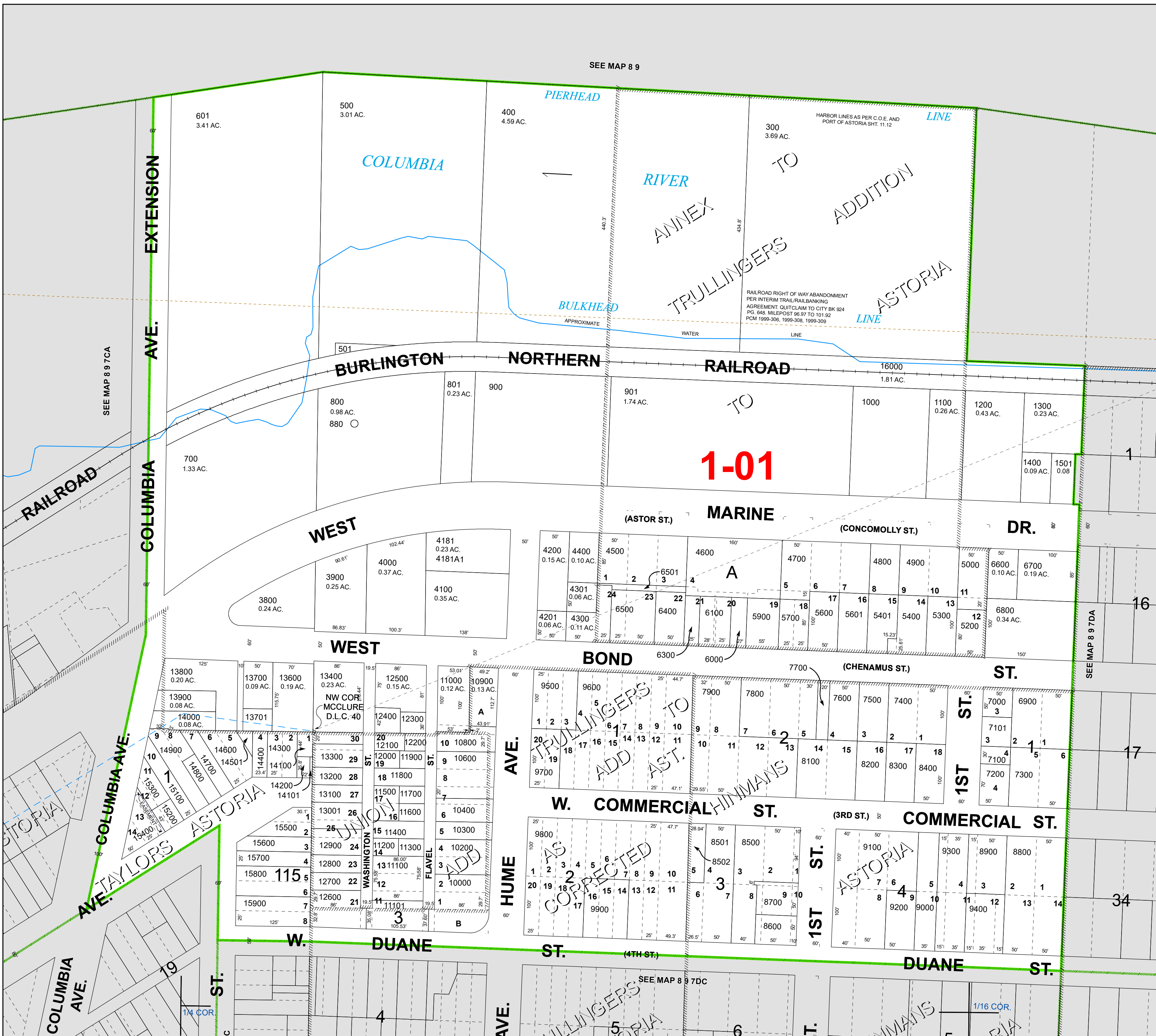
200	1701	2900	4600-A1	10501
600	1800	3000	5100	10700
601-A1	1900	3100	5500	10801
601-A2	2000	3200	5800	10802
901-A1	2100	3300	6200	10901
1001	2200	3400	8000	13000
1500	2300	3500	8801	13301
1600	2400	3600	8901	13500
1600-A1	2500	3601	9001	14500
1601	2600	3700	9801	15000
1602	2700	4101	10100	
1700	2800	4180	10500	



FOR ADDITIONAL MAPS VISIT OUR WEBSITE AT
www.clatsopcounty.gov

This map was produced using Clatsop County GIS data. The data is maintained by Clatsop County to support its governmental activities. Clatsop County is not responsible for any map errors, possible misuse, or misinterpretation.

PLOT DATE: 5/23/2023
 8 09 07 DB



SEE MAP 8 9

SEE MAP 8 9 7DC

SEE MAP 8 9 7CA

SEE MAP 8 9 7DA

AS CORRECTED

TRULLINGERS TO ADD AST.

TRULLINGERS TO ADD AST.

HARBOR LINES AS PER C.O.E. AND PORT OF ASTORIA SHT. 11.12

RAILROAD RIGHT OF WAY ABANDONMENT PER INTERIM TRAIL/RAILBANKING AGREEMENT. QUIT CLAIM TO CITY BK 924 PG. 648; MILEPOST 96.97 TO 101.92 PCM 1999-306, 1999-308, 1999-309

1/4 COR.

1/16 COR.