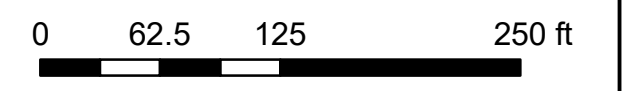
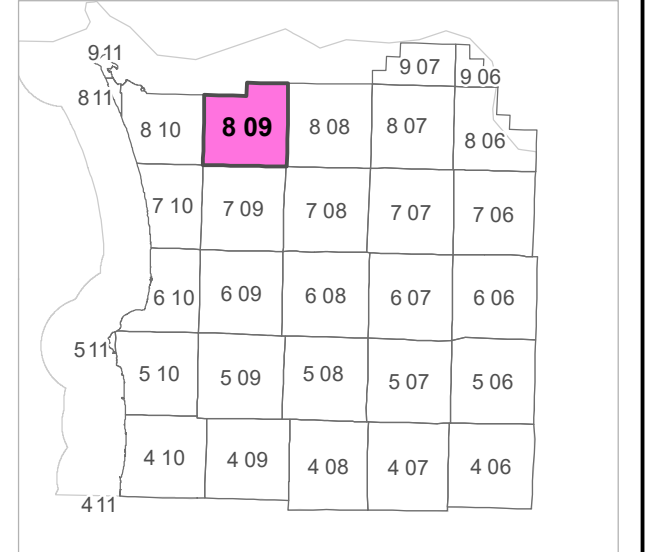


8 09 30 CC  
 CLATSOP COUNTY  
 SW 1/4 SW 1/4 SEC.30 T8N R9W WM



Scale 1:1,200



			3	2	1
7	8	9	10	11	12
18	17	16	15	14	13
19	20	21	22	23	24
30	29	28	27	26	25
31	32	33	34	35	36

24	19	20
25	30	29
36	31	32

CANCELLED TAXLOT NUMBERS

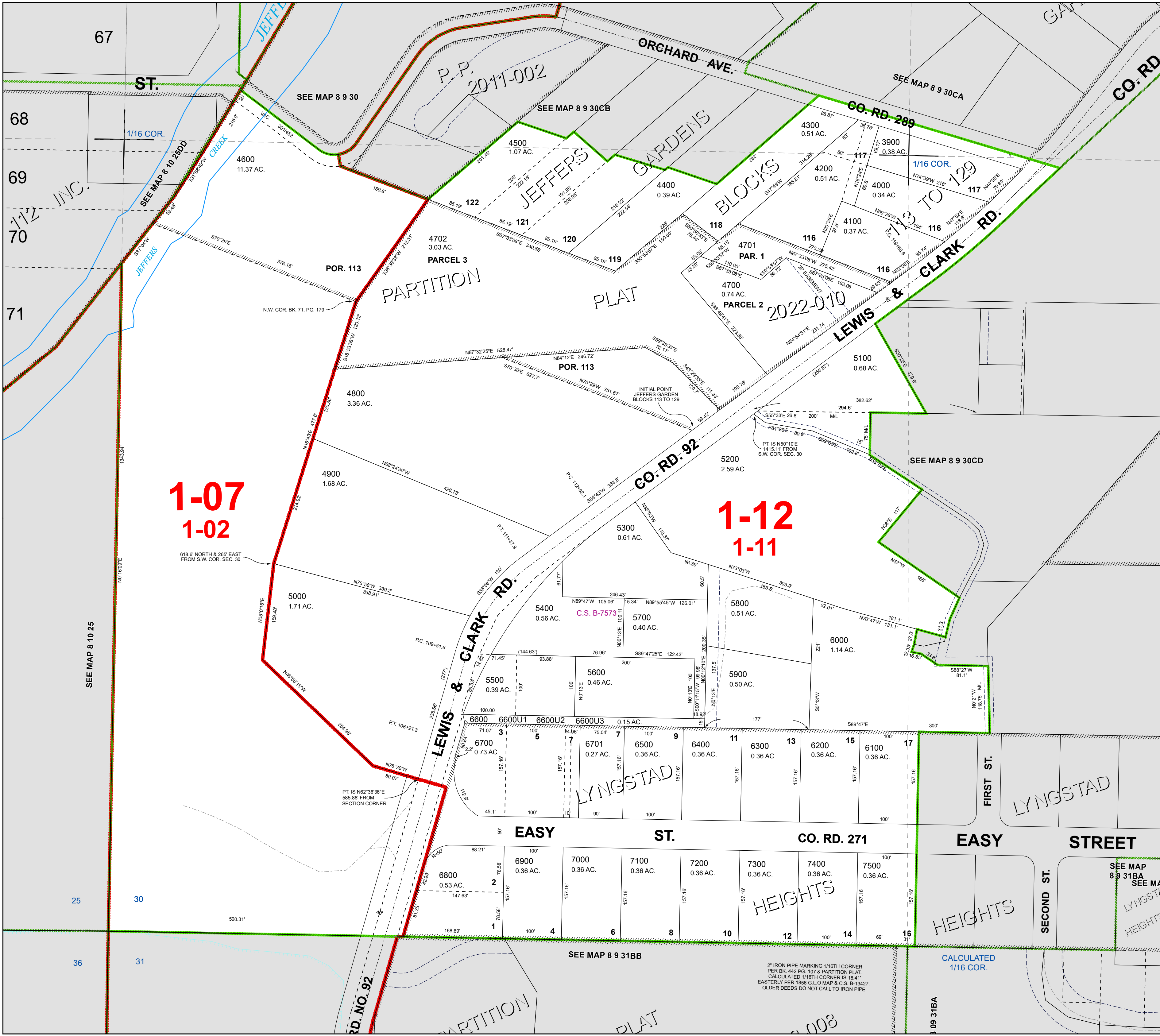
100	701	1501	2500	3300
101	800	1600	2501	3301
102	900	1700	2502	3400
103	901	1800	2600	3500
200	1000	1900	2700	3600
300	1100	2000	2800	3700
301	1101	2001	2900	3800
302	1200	2002	2901	4601
400	1300	2100	3000	
500	1301	2200	3001	
600	1400	2300	3100	
700	1500	2400	3200	



FOR ADDITIONAL MAPS VISIT OUR WEBSITE AT  
[www.co.clatsop.or.us](http://www.co.clatsop.or.us)

This map was produced using Clatsop County GIS data. The data is maintained by Clatsop County to support its governmental activities. Clatsop County is not responsible for any map errors, possible misuse, or misinterpretation.

PLOT DATE: 7/20/2022  
 8 09 30 CC



1-07  
 1-02

1-12  
 1-11

2" IRON PIPE MARKING 1/16TH CORNER PER BK. 442 PG. 107 & PARTITION PLAT. CALCULATED 1/16TH CORNER IS 18.41' EASTERLY PER 1856 G.L.O. MAP & C.S. B-13427. OLDER DEEDS DO NOT CALL TO IRON PIPE.

CALCULATED 1/16 COR.

