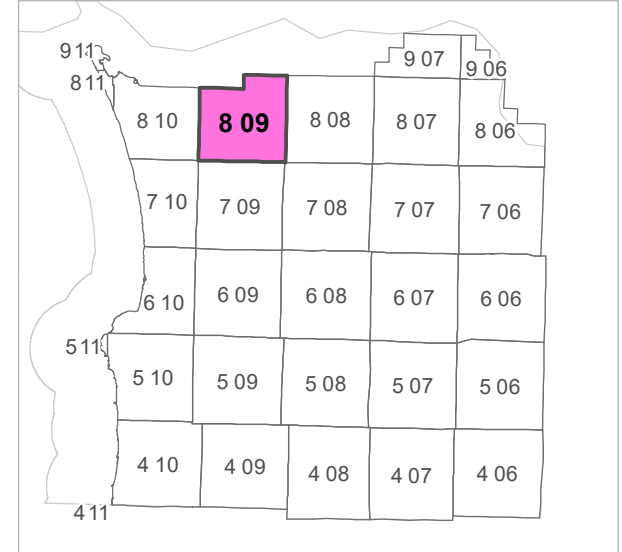


8 09 30 CA  
**CLATSOP COUNTY**  
 NE 1/4 SW 1/4 SEC.30 T8N R9W WM

0 62.5 125 250 ft

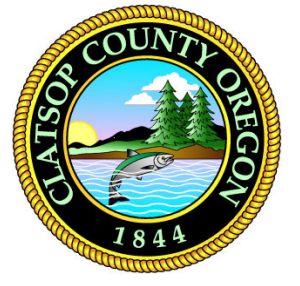
Scale 1:1,200



			3	2	1
7	8	9	10	11	12
18	17	16	15	14	13
19	20	21	22	23	24
30	29	28	27	26	25
31	32	33	34	35	36

24	19	20
25	30	29
36	31	32

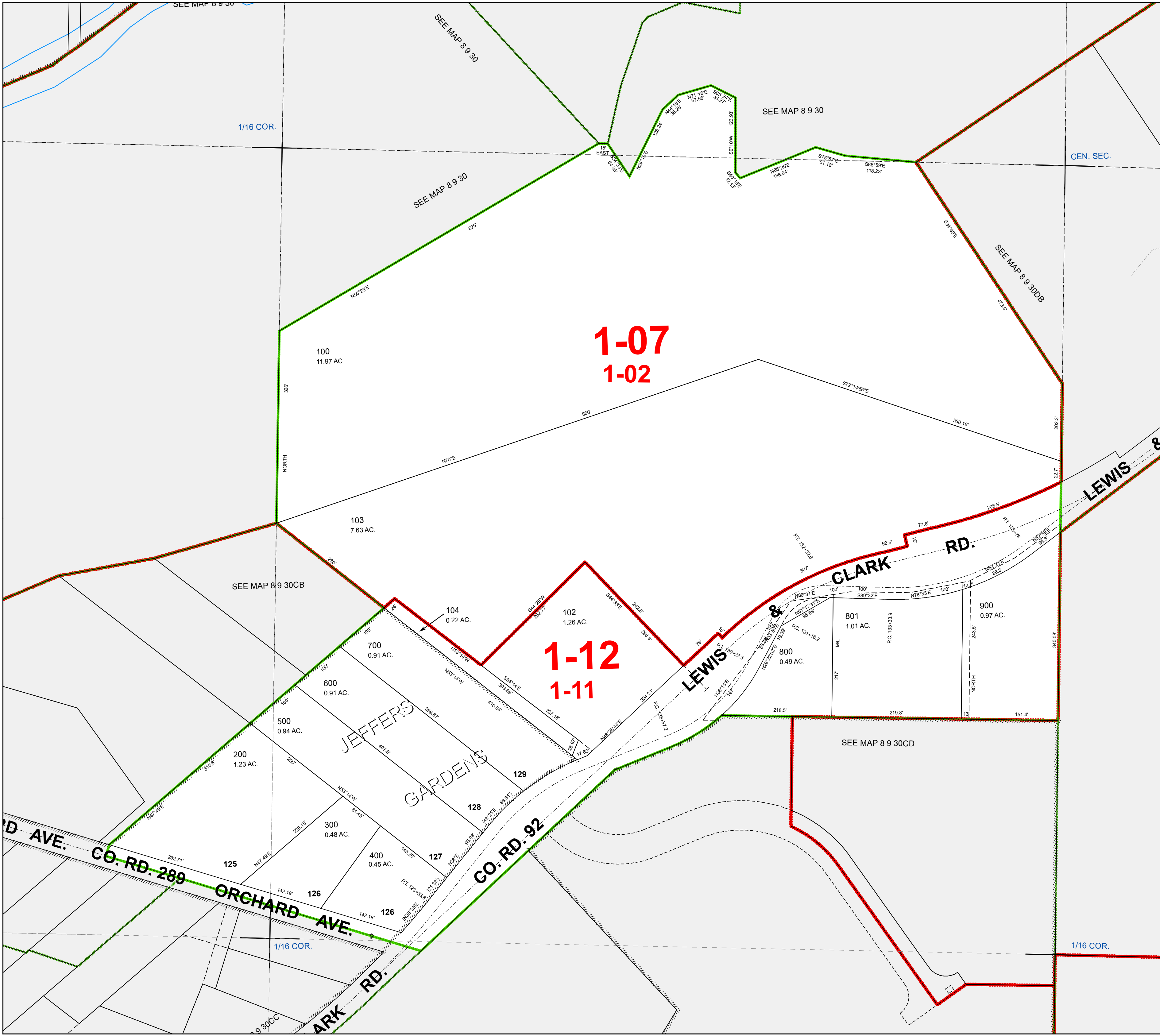
**CANCELLED TAXLOT NUMBERS**  
 101 105 510 802



FOR ADDITIONAL MAPS VISIT OUR WEBSITE AT  
[www.co.clatsop.or.us](http://www.co.clatsop.or.us)

*This map was produced using Clatsop County GIS data. The data is maintained by Clatsop County to support its governmental activities. Clatsop County is not responsible for any map errors, possible misuse, or misinterpretation.*

PLOT DATE: 12/02/2019  
**8 09 30 CA**



**1-07**  
**1-02**

**1-12**  
**1-11**

SEE MAP 8 9 30  
 SEE MAP 8 9 30DB  
 SEE MAP 8 9 30CB  
 SEE MAP 8 9 30CD  
 1/16 COR.  
 CEN. SEC.  
 100 11.97 AC.  
 103 7.63 AC.  
 104 0.22 AC.  
 102 1.26 AC.  
 700 0.91 AC.  
 600 0.91 AC.  
 500 0.94 AC.  
 200 1.23 AC.  
 300 0.48 AC.  
 400 0.45 AC.  
 125  
 126  
 127  
 128  
 129  
 801 1.01 AC.  
 800 0.49 AC.  
 900 0.97 AC.  
 CLARK RD.  
 LEWIS RD.  
 JEFFERS GARDENS  
 ORCHARD AVE.  
 CO. RD. 289  
 CO. RD. 92  
 ARK RD.  
 1/16 COR.