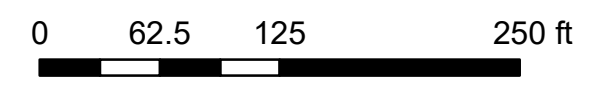
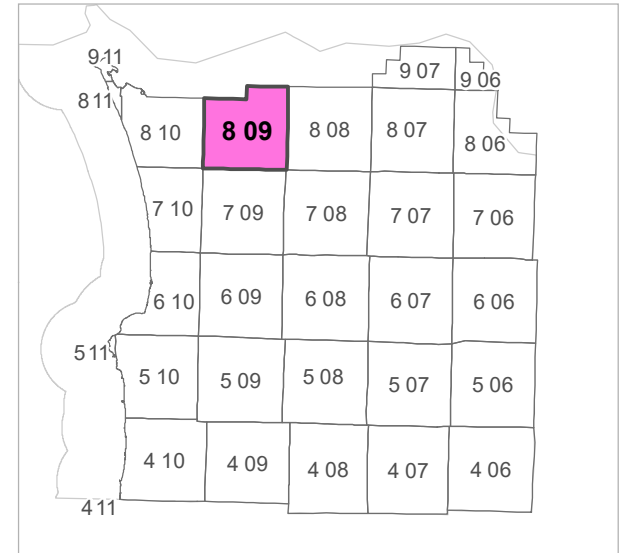


8 09 18 AD
CLATSOP COUNTY
 SE 1/4 NE 1/4 SEC.18 T8N R9W WM



Scale 1:1,200



| | | | | | |
|----|----|----|----|----|----|
| | | | 3 | 2 | 1 |
| 7 | 8 | 9 | 10 | 11 | 12 |
| 18 | 17 | 16 | 15 | 14 | 13 |
| 19 | 20 | 21 | 22 | 23 | 24 |
| 30 | 29 | 28 | 27 | 26 | 25 |
| 31 | 32 | 33 | 34 | 35 | 36 |

| | | |
|----|----|----|
| 12 | 7 | 8 |
| 13 | 18 | 17 |
| 24 | 19 | 20 |

CANCELLED TAXLOT NUMBERS

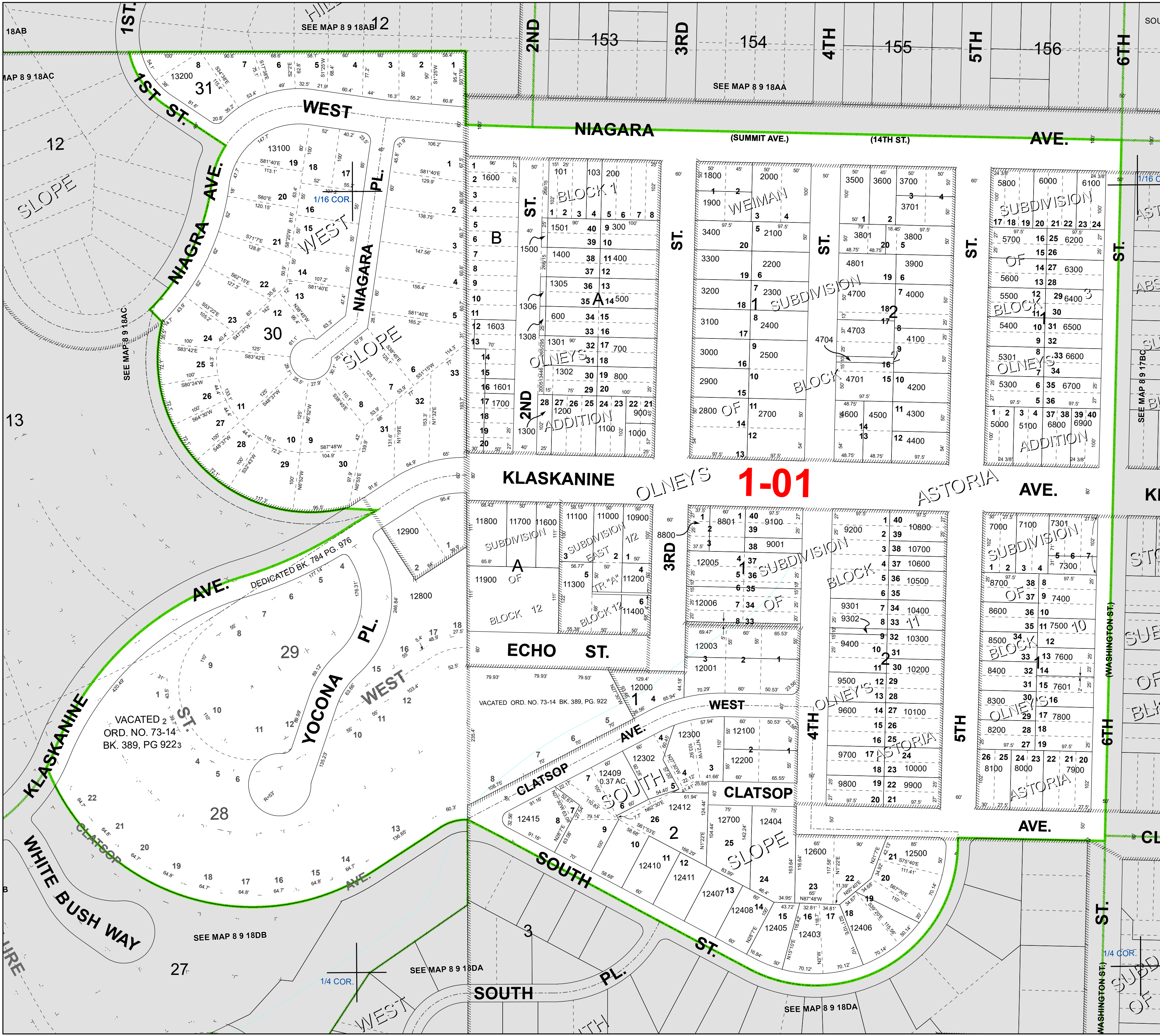
| | | | | |
|------|------|-------|-------|-------|
| 100 | 1602 | 7200 | 12301 | 12501 |
| 102 | 2600 | 7700 | 12400 | 12801 |
| 104 | 4702 | 9300 | 12401 | 13000 |
| 1303 | 4800 | 11500 | 12402 | 13101 |
| 1304 | 4900 | 11801 | 12413 | |
| 1307 | 5200 | 12002 | 12414 | |
| 1401 | 5900 | 12004 | 12416 | |



FOR ADDITIONAL MAPS VISIT OUR WEBSITE AT
www.co.clatsop.or.us

This map was produced using Clatsop County GIS data. The data is maintained by Clatsop County to support its governmental activities. Clatsop County is not responsible for any map errors, possible misuse, or misinterpretation.

PLOT DATE: 1/06/2023
8 09 18 AD



OLNEYS 1-01

VACATED 2
 ORD. NO. 73-14
 BK. 389, PG 9223

VACATED ORD. NO. 73-14 BK. 389, PG. 922

SEE MAP 8 9 18DA

SEE MAP 8 9 18DB

SEE MAP 8 9 18DA

SEE MAP 8 9 18AA

SEE MAP 8 9 18AB

MAP 8 9 18AC

SEE MAP 8 9 18AC

SEE MAP 8 9 17BC

SEE MAP 8 9 17BC

SEE MAP 8 9 17BC

SEE MAP 8 9 17BC

SEE MAP 8 9 17BC

SEE MAP 8 9 17BC

SEE MAP 8 9 17BC

SEE MAP 8 9 17BC

SEE MAP 8 9 17BC

SEE MAP 8 9 17BC

SEE MAP 8 9 17BC

SEE MAP 8 9 17BC

SEE MAP 8 9 17BC

SEE MAP 8 9 17BC

SEE MAP 8 9 17BC

SEE MAP 8 9 17BC