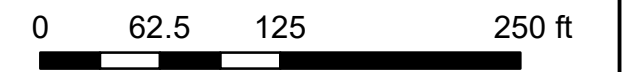
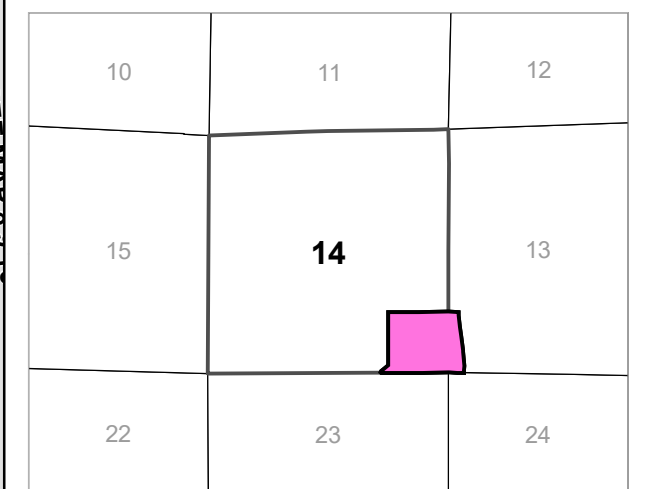
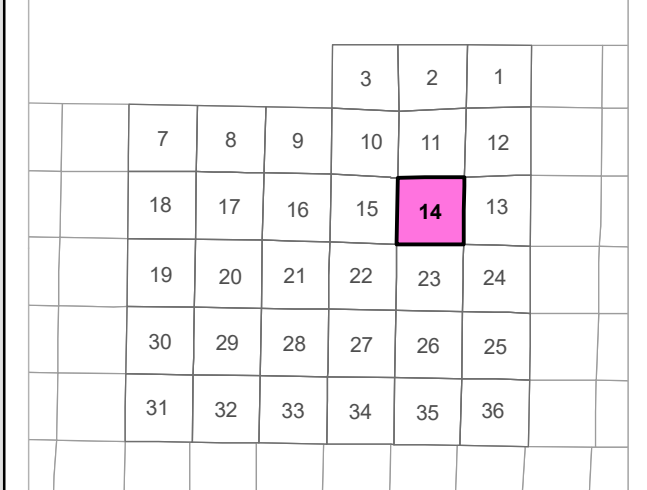
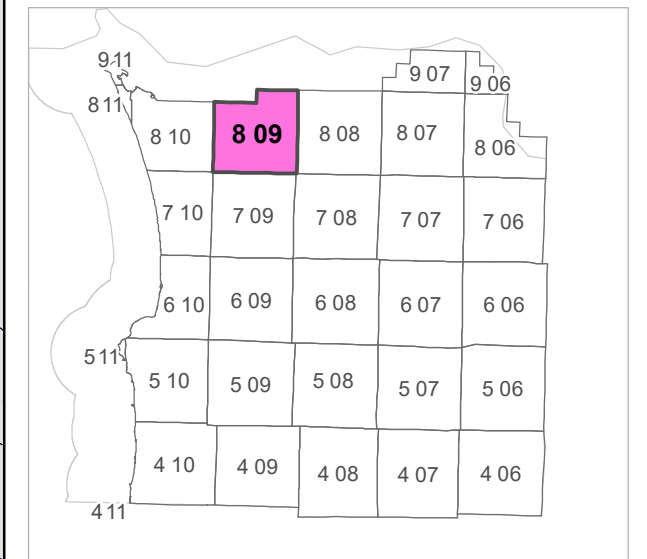


8 09 14 DD
 CLATSOP COUNTY
 SE 1/4 SE 1/4 SEC.14 T8N R9W WM



Scale 1:1,200



CANCELLED TAXLOT NUMBERS

600U1 600U3 700U2 701 1201
 600U2 700U1 700U3 1101



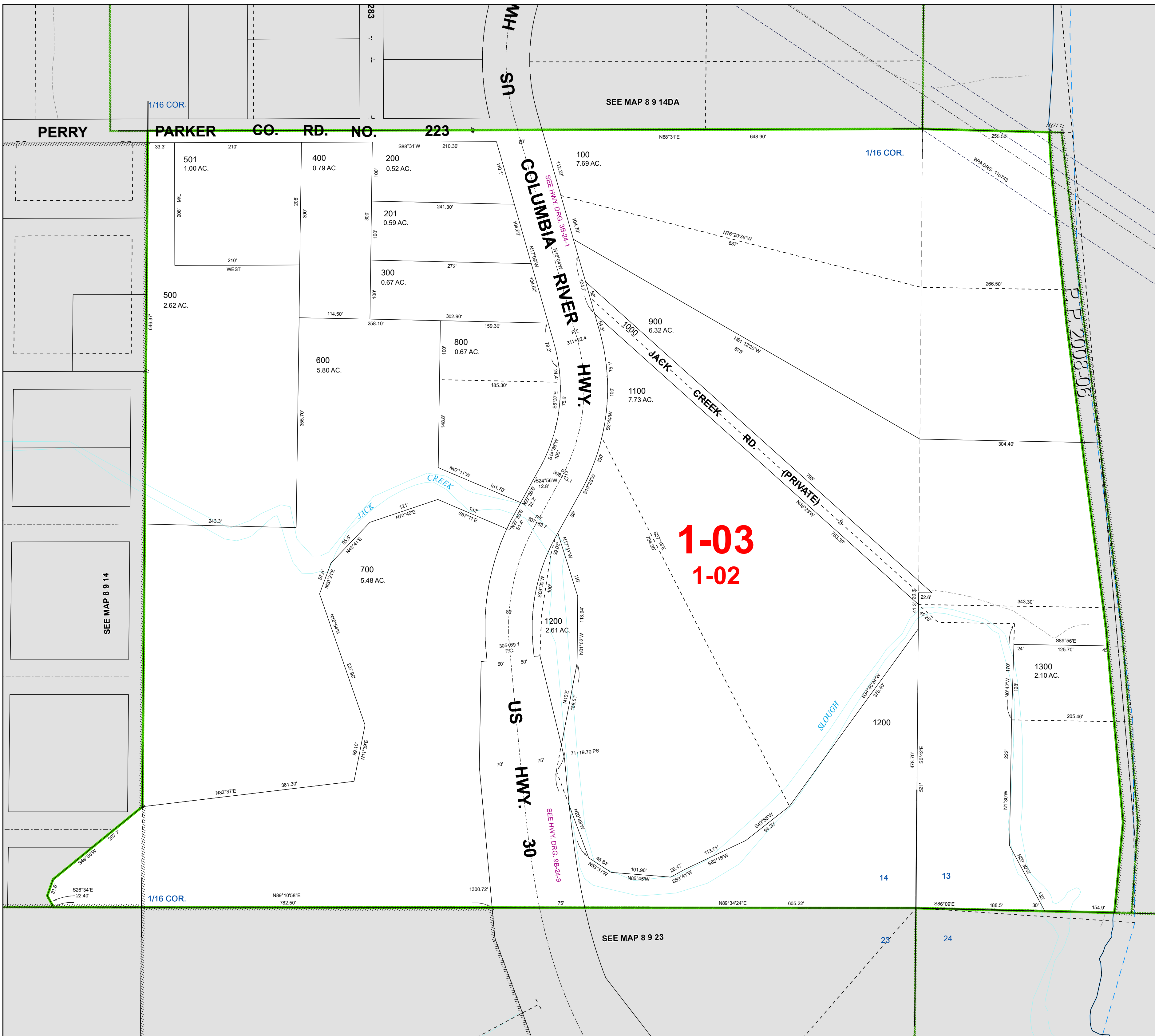
FOR ADDITIONAL MAPS VISIT OUR WEBSITE AT
www.co.clatsop.or.us

This map was produced using Clatsop County GIS data. The data is maintained by Clatsop County to support its governmental activities. Clatsop County is not responsible for any map errors, possible misuse, or misinterpretation.



PLOT DATE: 11/02/2021

8 09 14 DD



1-03
1-02

SEE MAP 8 9 14

SEE MAP 8 9 14

SEE MAP 8 9 23

1/16 COR.

1/16 COR.

1/16 COR.

23

24

PERRY PARKER CO. RD. NO. 223

COLUMBIA RIVER HWY.

JACK CREEK RD. (PRIVATE)

US HWY. 30

SLOUGH

P.P. 2008-06

SEE MAP 8 9 14DA

501
1.00 AC.

400
0.79 AC.

200
0.52 AC.

100
7.69 AC.

201
0.59 AC.

300
0.67 AC.

500
2.62 AC.

600
5.80 AC.

800
0.67 AC.

900
6.32 AC.

1100
7.73 AC.

700
5.48 AC.

1200
2.61 AC.

1300
2.10 AC.

1200

14

13

23

24