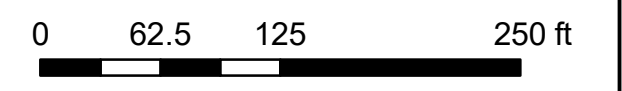
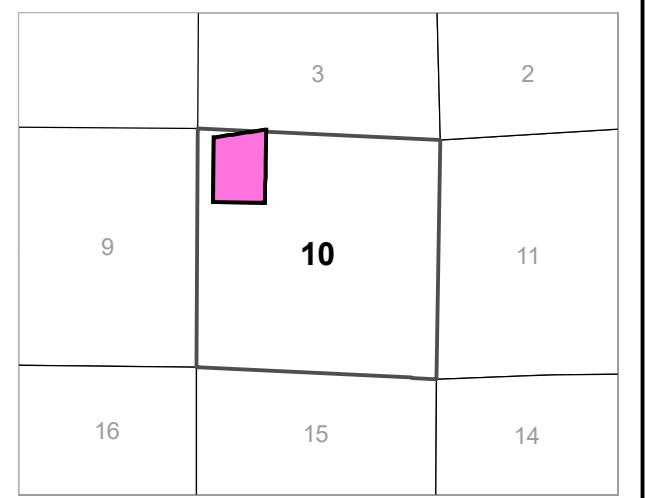
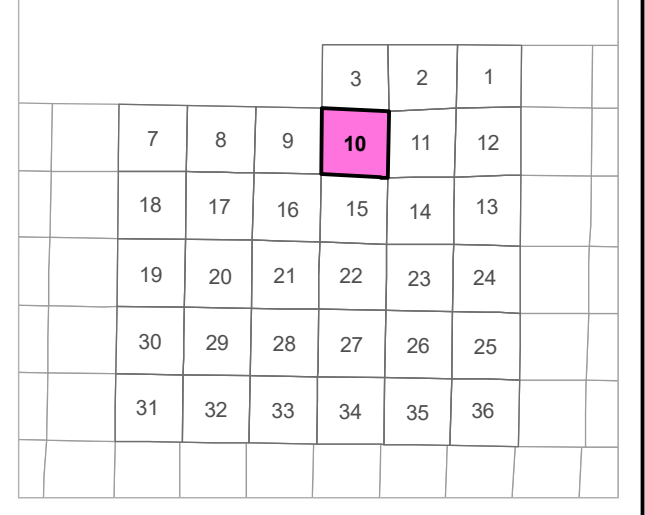
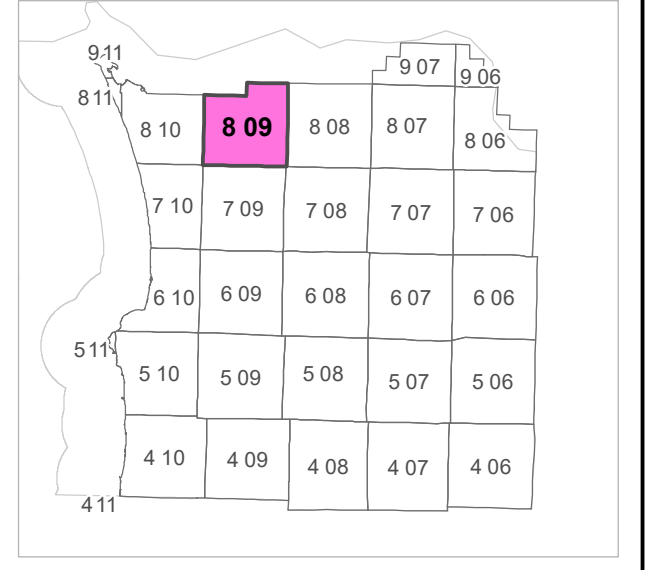


8 09 10 BB
 CLATSOP COUNTY
 NW 1/4 NW 1/4 SEC.10 T8N R9W WM



Scale 1:1,200



CANCELLED TAXLOT NUMBERS

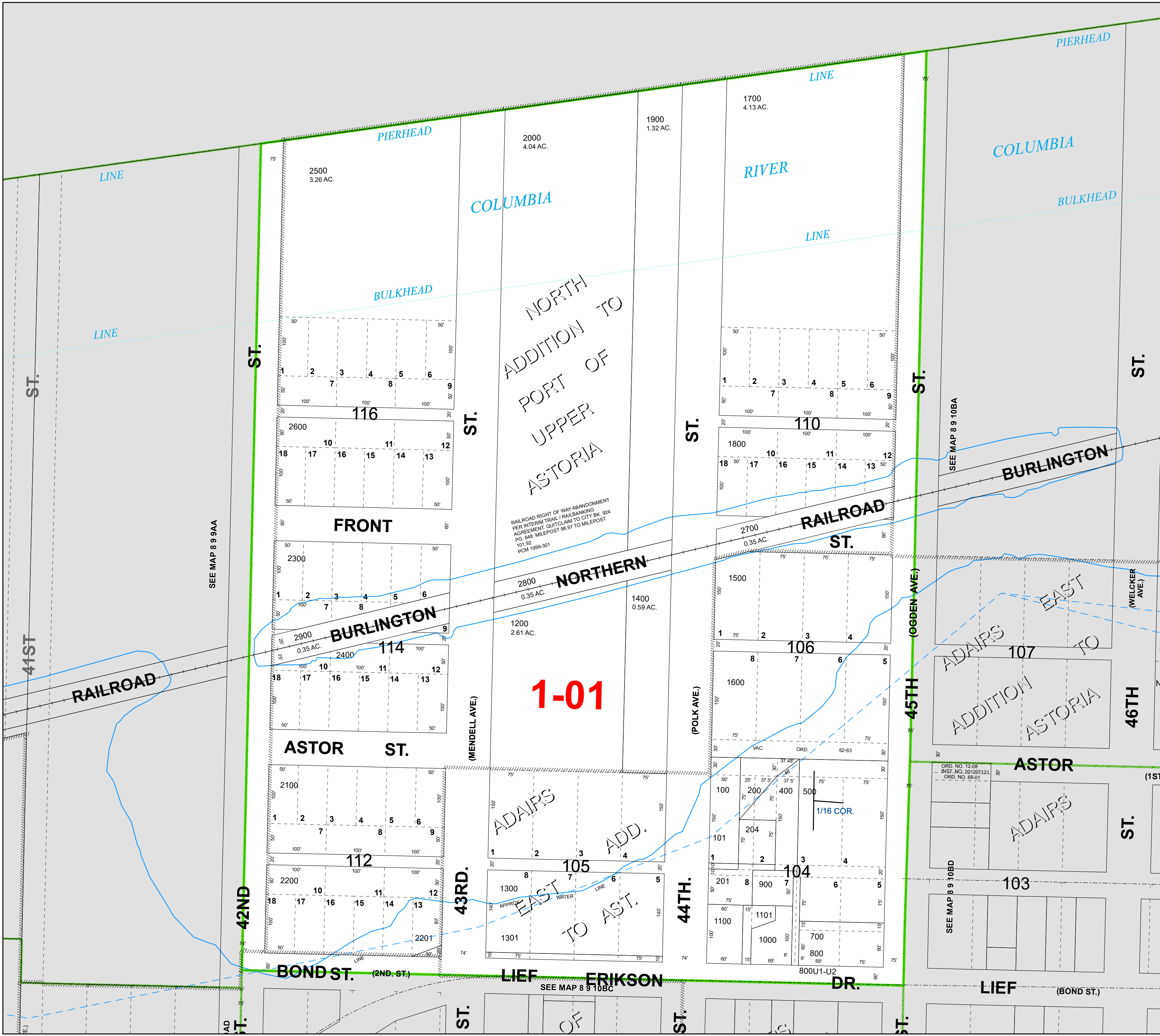
- 202 205 401 600
- 203 300 501 601



FOR ADDITIONAL MAPS VISIT OUR WEBSITE AT
www.clatsopcounty.gov

This map was produced using Clatsop County GIS data. The data is maintained by Clatsop County to support its governmental activities. Clatsop County is not responsible for any map errors, possible misuse, or misinterpretation.

PLOT DATE: 8/18/2023
 8 09 10 BB



1-01

RAILROAD RIGHT OF WAY ABANDONMENT
 PER INTERIM TRAIL/RAILBANKING
 AGREEMENT QUITCLAIM TO CITY BK. 924
 PG. 648. MILEPOST 96.97 TO MILEPOST
 101.92.
 PCN 1999-301

ADAIR'S
 ADD.
 EAST TO AST.

NORTH
 ADDITION TO
 PORT OF
 UPPER
 ASTORIA

ADAIR'S
 ADDITION
 EAST TO
 ASTORIA

ADAIR'S
 ADDITION
 ASTORIA

SEE MAP 8 9 9AA

SEE MAP 8 9 10BA

SEE MAP 8 9 10BD

SEE MAP 8 9 10BC

ORD. NO. 12-38
 INST. NO. 201207121
 ORD. NO. 68-01

