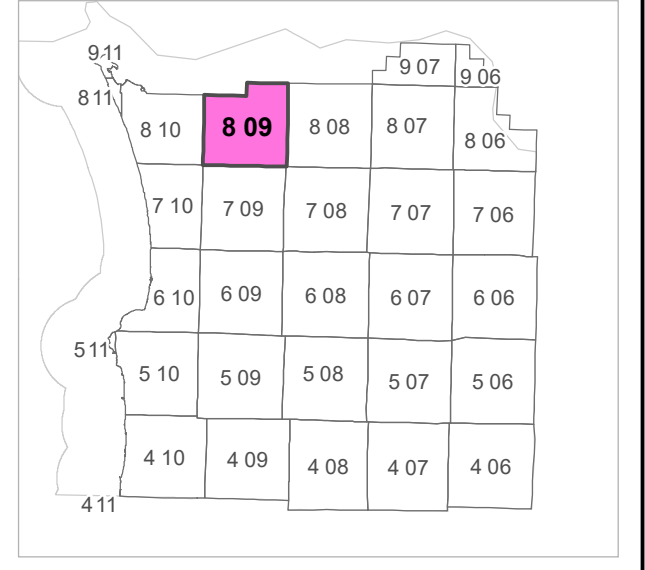
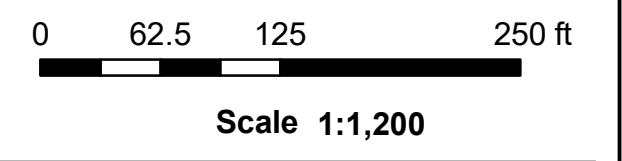


8 09 10 BA
CLATSOP COUNTY
NE 1/4 NW 1/4 SEC.10 T8N R9W WM



			3	2	1	
	7	8	9	10	11	12
18	17	16	15	14	13	
19	20	21	22	23	24	
30	29	28	27	26	25	
31	32	33	34	35	36	

		3	2	
9		10		11
16		15		14

CANCELLED TAXLOT NUMBERS

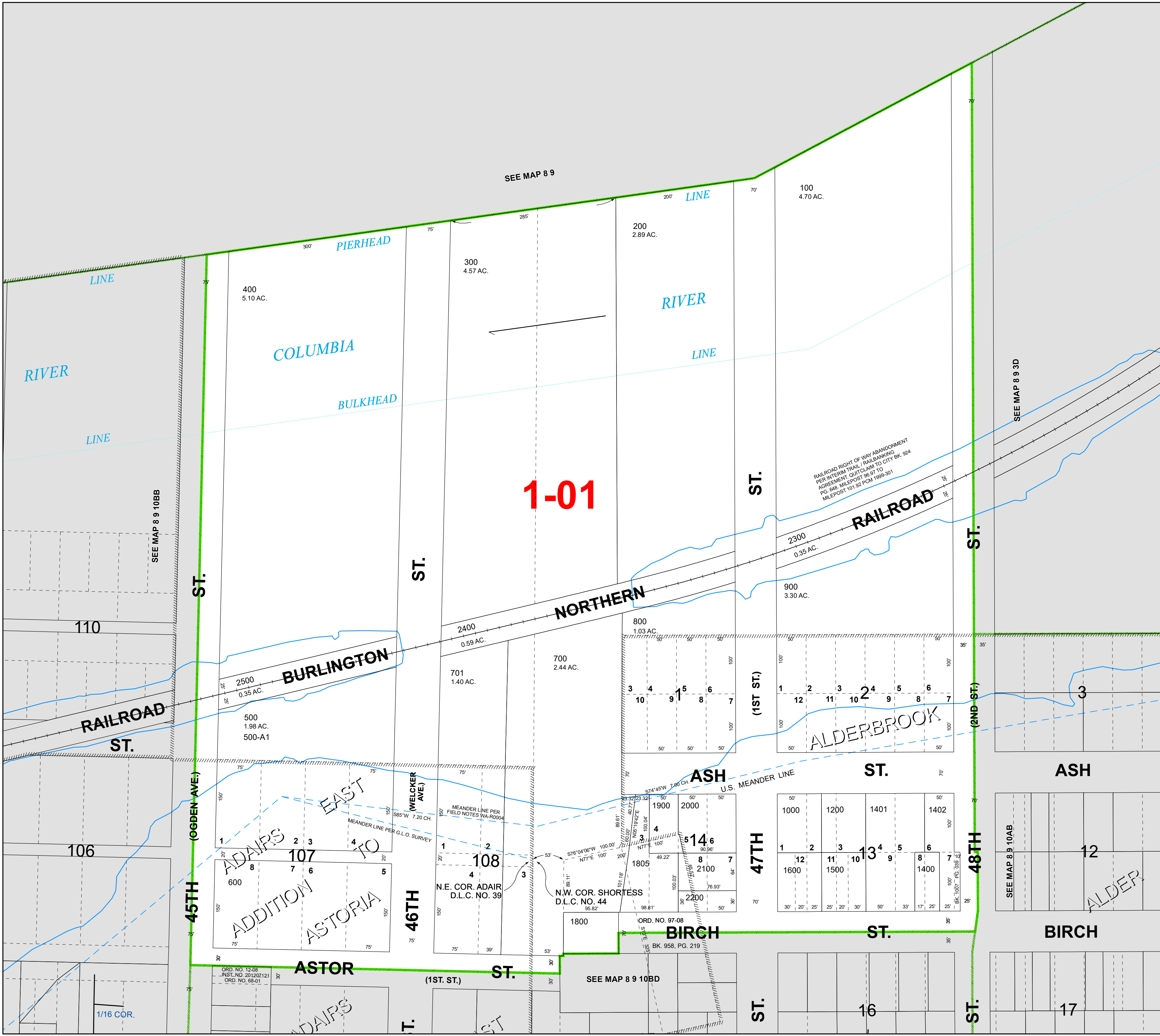
700-A1	1300	1801	1804
1100	1301	1802	1806
1201	1700	1803	



FOR ADDITIONAL MAPS VISIT OUR WEBSITE AT
www.clatsopcounty.gov

This map was produced using Clatsop County GIS data. The data is maintained by Clatsop County to support its governmental activities. Clatsop County is not responsible for any map errors, possible misuse, or misinterpretation.

PLOT DATE: 6/02/2023
8 09 10 BA



1-01

45TH (OGDEN AVE.)

106

ADAIRS ADDITION ASTORIA

ASTOR

BURLINGTON

46TH

107

108

(1ST ST.)

700 2.44 AC.

BIRCH

SEE MAP 8 9 10BD

NORTHERN

ASH

47TH

(1ST ST.)

ALDERBROOK

ST.

ST.

48TH

(2ND ST.)

ASH

BIRCH

ALDER

SEE MAP 8 9 10AB

SEE MAP 8 9 3D

SEE MAP 8 9 10BB

ORD. NO. 12-08
INST. NO. 2312031121
ORD. NO. 88-01

ORD. NO. 97-08
BK. 958, PG. 219

RAILROAD RIGHT OF WAY ABANDONMENT
PER INTERIM TRAIL RAILBANKING
AGREEMENT QUITCLAIM TO CITY BK. 924
PG. 648 MILEPOST 96.97 TO
MILEPOST 101.92 PCM 1999-301

110

106

1/16 COR.

SEE MAP 8 9

200
2.89 AC.

100
4.70 AC.

300
4.57 AC.

400
5.10 AC.

701
1.40 AC.

800
1.03 AC.

900
3.30 AC.

500
1.98 AC.
500-A1

600

1800

1900

2000

1000

1200

1401

1402

1600

1500

1304

1400

12

17

16

1805

8

2100

7

5146

2200

1

2

3

4

5

6

7

8

9

10

11

12

13

14

15

16

17

18

19

20

21

22

23

24

25

26

27

28

29

30

31

32

33

34

35

36

37

38

39

40

41

42

43

44

45

46

47

48

49

50

51

52

53

54

55

56

57

58

59

60

61

62

63

64

65

66

67

68

69

70

71

72

73

74

75

76

77

78

79

80

81

82

83

84

85

86

87

88

89

90

91

92

93

94

95

96

97

98

99

100

101

102

103

104

105

106

107

108

109

110

111

112

113

114

115

116

117

118

119

120

121

122

123

124

125

126

127

128

129

130

131

132

133

134

135

136

137

138

139

140

141

142

143

144

145

146

147

148

149

150

151

152

153

154

155

156

157

158

159

160

161

162

163

164

165

166

167

168

169

170

171

172

173

174

175

176

177

178

179

180

181

182

183

184

185

186

187

188

189

190

191

192

193

194

195

196

197

198

199

200

201