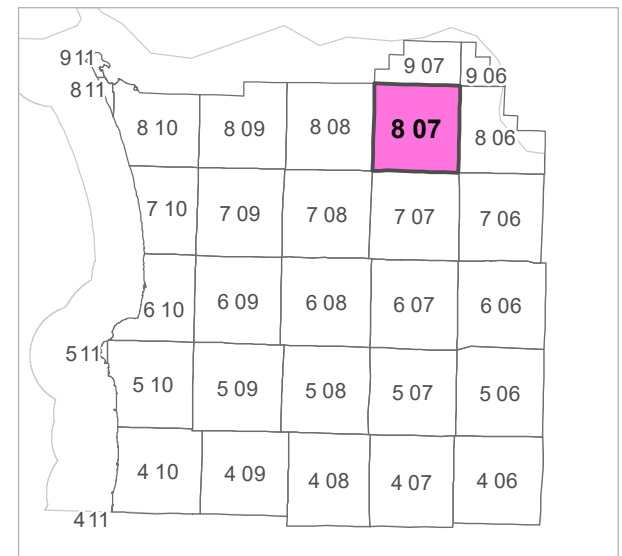


8 07 16  
CLATSOP COUNTY

SECTION 16 T8N R7W WM  
0 250 500 1,000 ft

Scale 1:4,800



	6	5	4	3	2	1
	7	8	9	10	11	12
	18	17	16	15	14	13
	19	20	21	22	23	24
	30	29	28	27	26	25
	31	32	33	34	35	36

8	9	10
17	16	15
20	21	22

CANCELLED TAXLOT NUMBERS

901	1800	2100	2903	3601
1102	1900	2101	3000	3602
1103	2001	2300	3001	3603
1200	2002	2701	3002	3604
1202	2003	2800	3003	3605
1500	2004	2801	3100	3606
1600	2005	2802	3101	3607
1601	2006	2900	3400	3700
1602	2007	2901	3500	3801
1700	2008	2902	3600	3802



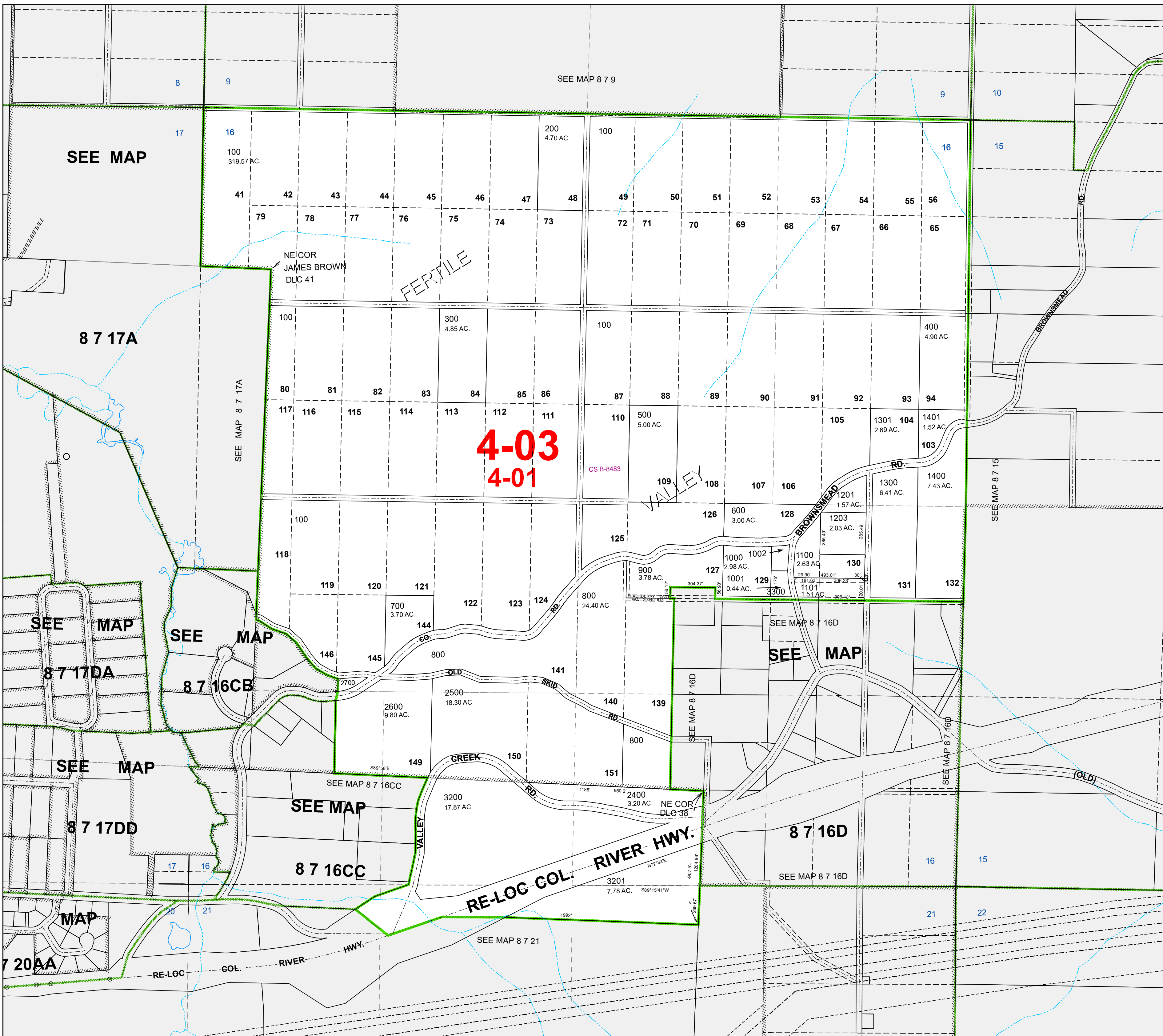
FOR ADDITIONAL MAPS VISIT OUR WEBSITE AT  
[www.co.clatsop.or.us](http://www.co.clatsop.or.us)

This map was produced using Clatsop County GIS data. The data is maintained by Clatsop County to support its governmental activities. Clatsop County is not responsible for any map errors, possible misuse, or misinterpretation.



PLOT DATE: 12/06/2019

8 07 16



4-03  
4-01

SEE MAP

8 7 17A

SEE MAP

8 7 17DA

SEE MAP

8 7 16CB

SEE MAP

8 7 17DD

SEE MAP

8 7 16CC

SEE MAP

8 7 16D

MAP

7 20AA

SEE MAP

RE-LOC COL. RIVER HWY.

SEE MAP 8 7 21

SEE MAP 8 7 17A

NEICOR JAMES BROWN DLC 41

SEE MAP 8 7 9

SEE MAP 8 7 15

SEE MAP 8 7 16D

SEE MAP 8 7 16D

SEE MAP 8 7 16D

SEE MAP 8 7 16D

100  
319.57 AC.

200  
4.70 AC.

300  
4.85 AC.

400  
4.90 AC.

500  
5.00 AC.

1301  
2.69 AC.

1401  
1.52 AC.

600  
3.00 AC.

1201  
1.57 AC.

1203  
2.03 AC.

1000  
2.98 AC.

1100  
2.63 AC.

1300  
6.41 AC.

1400  
7.43 AC.

900  
3.78 AC.

1001  
0.44 AC.

1101  
1.51 AC.

2600  
9.80 AC.

2500  
18.30 AC.

800  
24.40 AC.

3200  
17.87 AC.

2400  
3.20 AC.

3201  
7.78 AC.