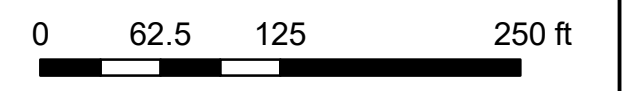
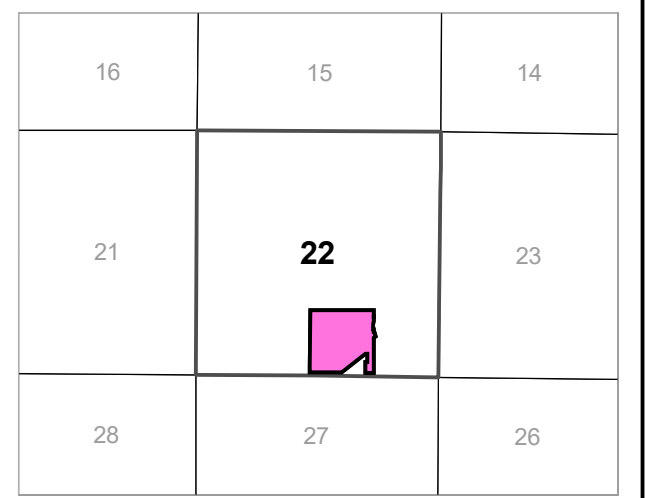
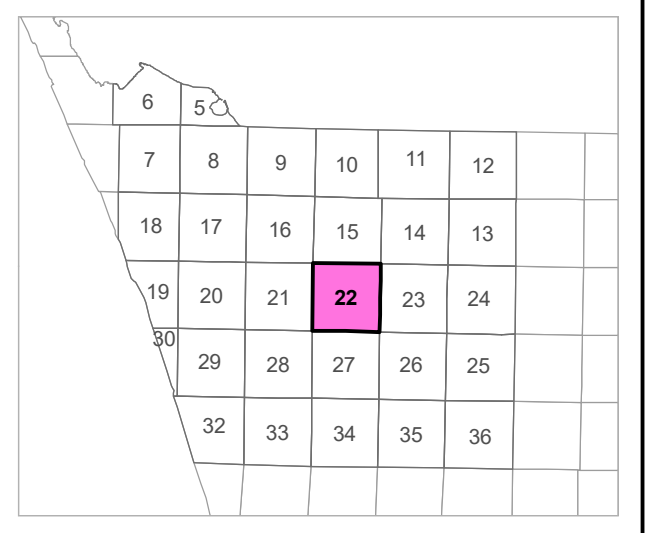
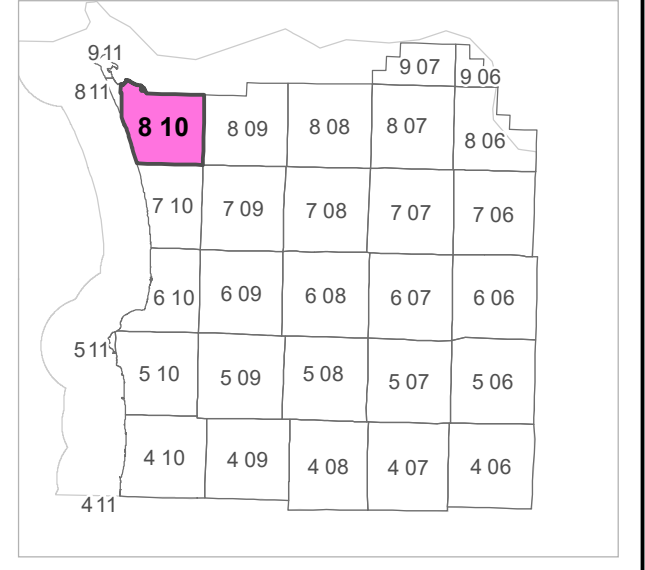


8 10 22 DC  
**CLATSOP COUNTY**  
 SW 1/4 SE 1/4 SEC.22 T8N R10W WM



Scale 1:1,200



**CANCELLED TAXLOT NUMBERS**

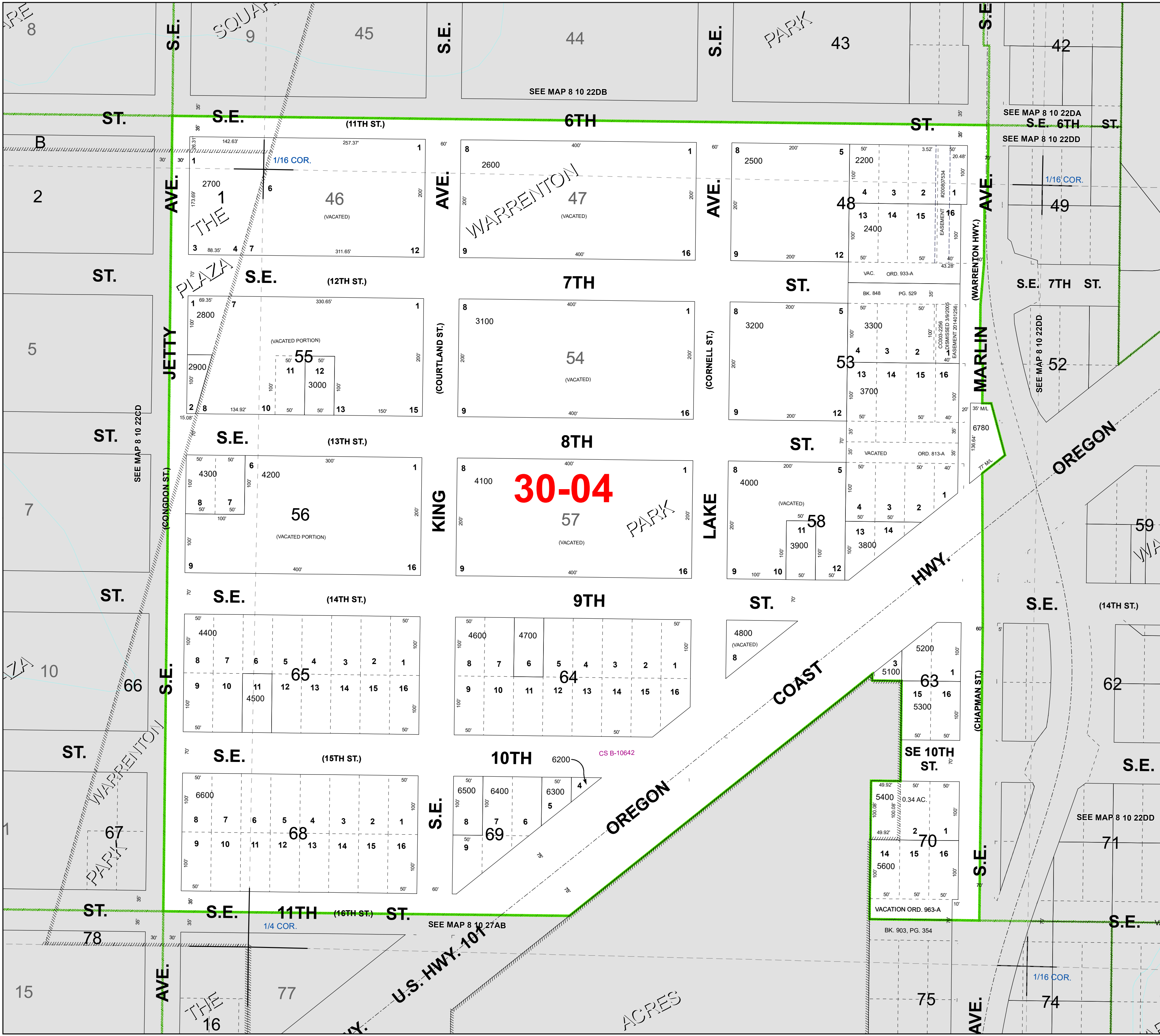
|     |      |      |      |      |
|-----|------|------|------|------|
| 100 | 800  | 1500 | 2300 | 5500 |
| 200 | 900  | 1600 | 2401 | 5700 |
| 300 | 1000 | 1700 | 2480 | 5800 |
| 400 | 1100 | 1800 | 3400 | 5900 |
| 500 | 1200 | 1900 | 3500 | 6000 |
| 600 | 1300 | 2000 | 3600 | 6100 |
| 700 | 1400 | 2100 | 4900 |      |



FOR ADDITIONAL MAPS VISIT OUR WEBSITE AT  
[www.clatsopcounty.gov](http://www.clatsopcounty.gov)

This map was produced using Clatsop County GIS data. The data is maintained by Clatsop County to support its governmental activities. Clatsop County is not responsible for any map errors, possible misuse, or misinterpretation.

PLOT DATE: 7/11/2023  
**8 10 22 DC**



**30-04**

SE 10TH ST.

SEE MAP 8 10 27AB

SEE MAP 8 10 22DD

SEE MAP 8 10 22DB

SEE MAP 8 10 22DA

SEE MAP 8 10 22DD

SEE MAP 8 10 22GD

BK. 903, PG. 354

VACATION ORD. 963-A

0.34 AC.

CS B-10642

1/4 COR.

1/16 COR.

SEE MAP 8 10 22DD

1/16 COR.

PLAZA

S.E.

S.E.

THE

THE

WARRENTON

PARK

PARK

COAST

OREGON

OREGON

ACRES

SQUAR

S.E.

S.E.

S.E.

S.E.

S.E.

S.E.

S.E.

S.E.

S.E.

S.E.

S.E.

S.E.

S.E.

S.E.

S.E.

S.E.

S.E.

S.E.

S.E.

S.E.

S.E.

S.E.

S.E.

S.E.

S.E.

S.E.

S.E.

AVE.

JETTY

(CONGDON ST.)

WARRENTON

WARRENTON

AVE.

AVE.

(COURTLAND ST.)

KING

WARRENTON

WARRENTON

AVE.

AVE.

(CORNELL ST.)

LAKE

WARRENTON

WARRENTON

AVE.

AVE.

(WARRENTON HWY.)

MARLIN

(CHAPMAN ST.)

WARRENTON

AVE.

1

1

1

1

1

1

1

1

1

1

1

1

1

1

1

1

1

1

1

1

1

1

1

1

2

2

2

2

2

2

2

2

2

2

2

2

2

2

2

2

2

2

2

2

2

2

2

2

3

3

3

3

3

3

3

3

3

3

3

3

3

3

3

3

3

3

3

3

3

3

3

3

4

4

4

4

4

4

4

4

4

4

4

4

4

4

4

4

4

4

4

4

4

4

4

4

5

5

5

5

5

5

5

5

5

5

5

5

5

5

5

5

5

5

5

5

5

5

5

5

6

6

6

6

6

6

6

6

6

6

6

6

6

6

6

6

6

6

6

6

6

6

6

6

7

7

7

7

7

7

7

7

7

7

7

7

7

7

7

7

7

7

7

7

7

7

7

7

8

8

8

8

8

8

8

8

8

8

8

8

8

8

8

8

8

8

8

8

8

8

8

8

9

9

9

9

9

9

9

9

9

9

9

9

9

9

9

9

9

9