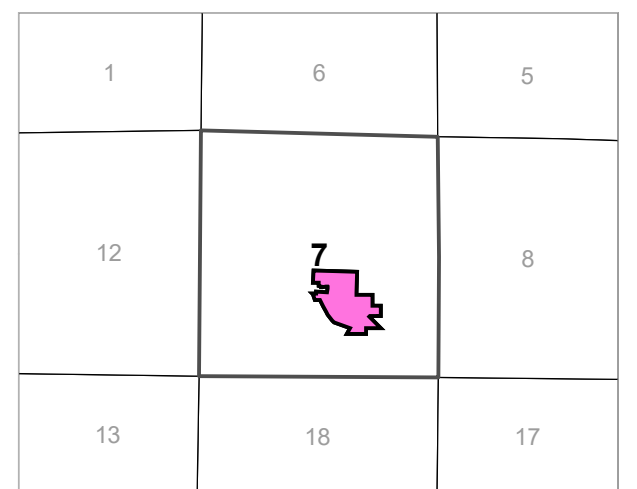
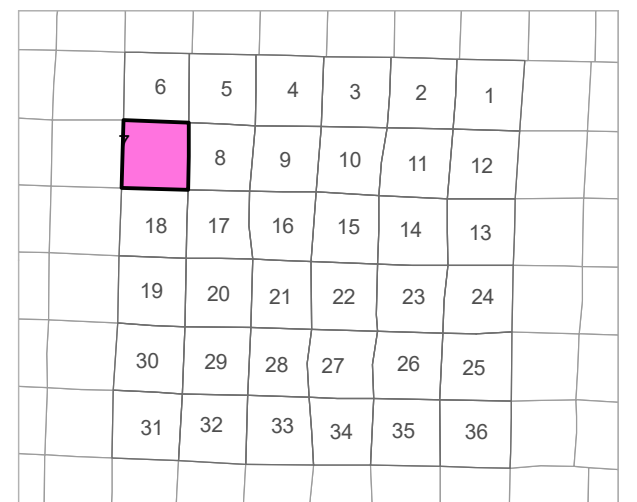
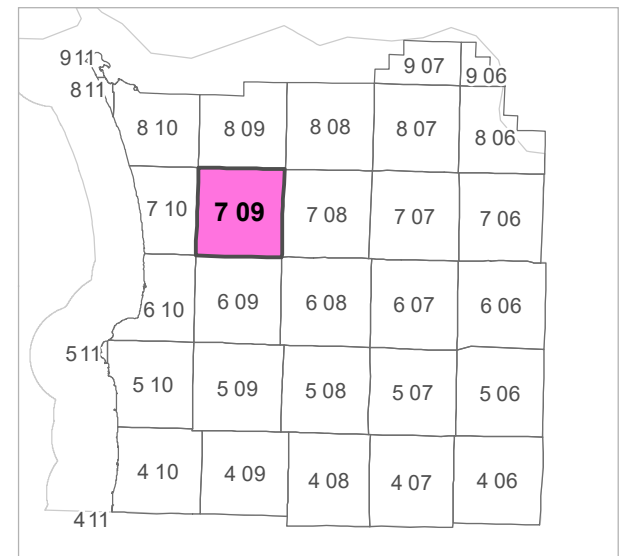


7 09 07 DB  
**CLATSOP COUNTY**  
 NW 1/4 SE 1/4 SEC.7 T7N R9W WM  
 0 62.5 125 250 ft

Scale 1:1,200



**CANCELLED TAXLOT NUMBERS**

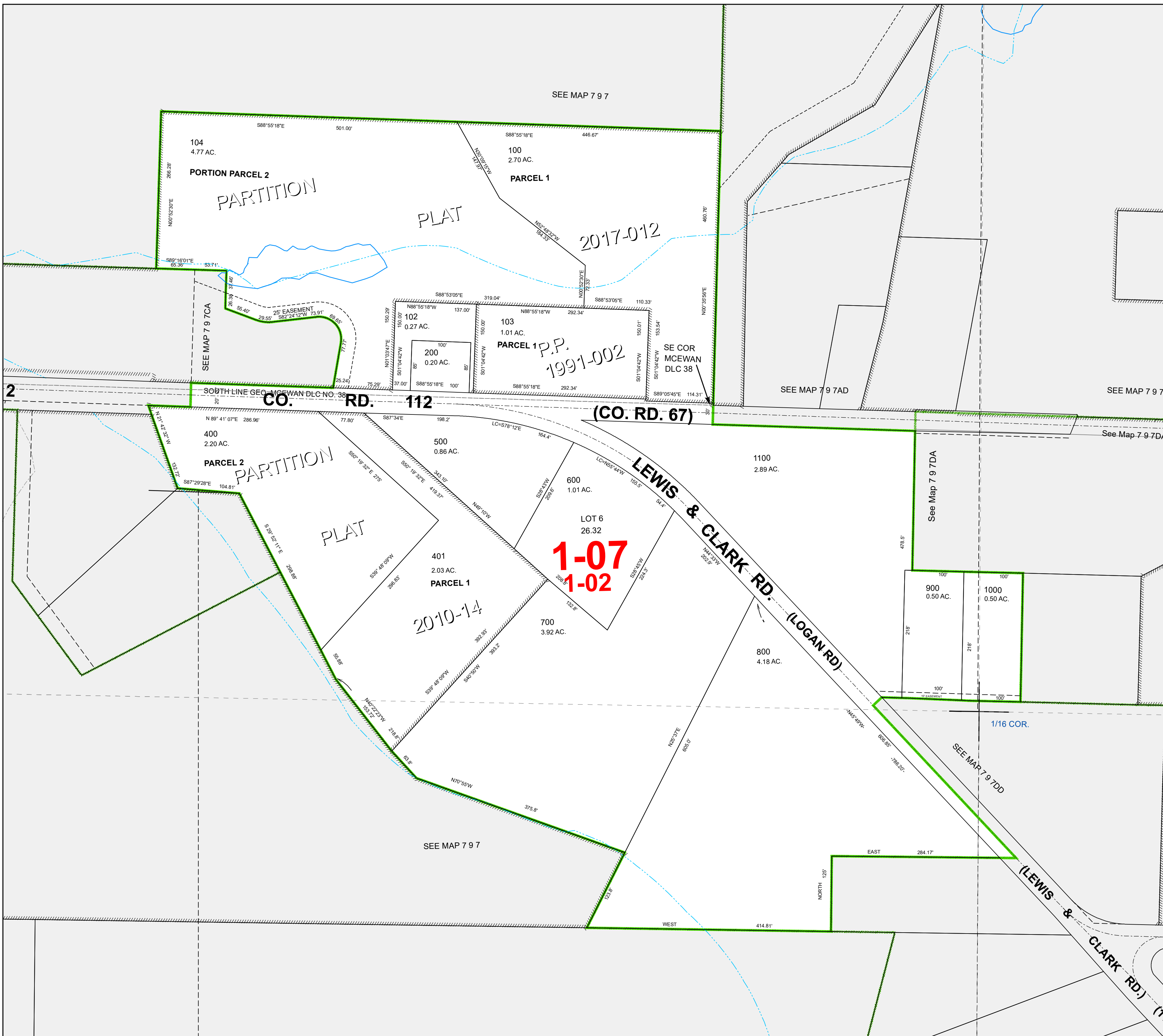
101 105 106



FOR ADDITIONAL MAPS VISIT OUR WEBSITE AT  
[www.co.clatsop.or.us](http://www.co.clatsop.or.us)

This map was produced using Clatsop County GIS data. The data is maintained by Clatsop County to support its governmental activities. Clatsop County is not responsible for any map errors, possible misuse, or misinterpretation.

PLOT DATE: 11/13/2019  
**7 09 07 DB**



**1-07**  
**1-02**

2017-012

2010-14

PARTITION  
 PLAT

PARTITION  
 PLAT

P.P.  
 1991-002

See Map 7 9 7DA

SEE MAP 7 9 7DD

(LEWIS & CLARK RD.) (T)

(CO. RD. 67)

2

CO. RD. 112

SEE MAP 7 9 7AD

SEE MAP 7 9 7A

See Map 7 9 7DA

1/16 COR.

WEST 414.81'

NORTH 125'

EAST 284.17'

104  
 4.77 AC.

100  
 2.70 AC.

102  
 0.27 AC.

103  
 1.01 AC.

400  
 2.20 AC.

401  
 2.03 AC.

600  
 1.01 AC.

LOT 6  
 26.32

700  
 3.92 AC.

1100  
 2.89 AC.

800  
 4.18 AC.

900  
 0.50 AC.

1000  
 0.50 AC.