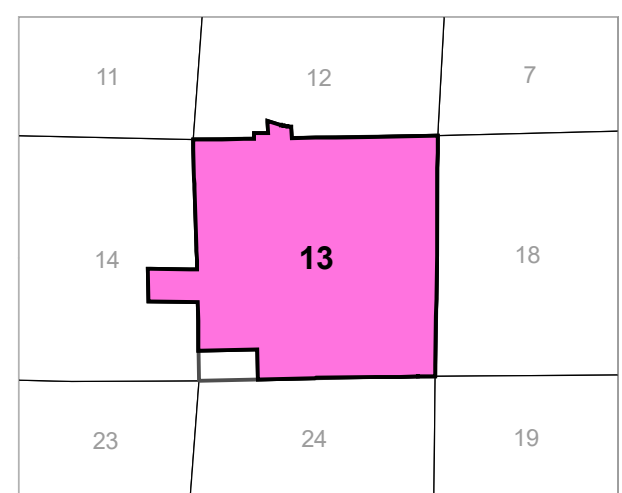
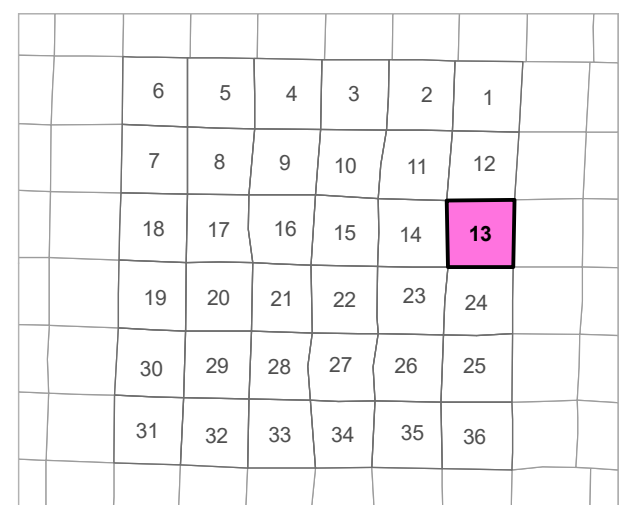
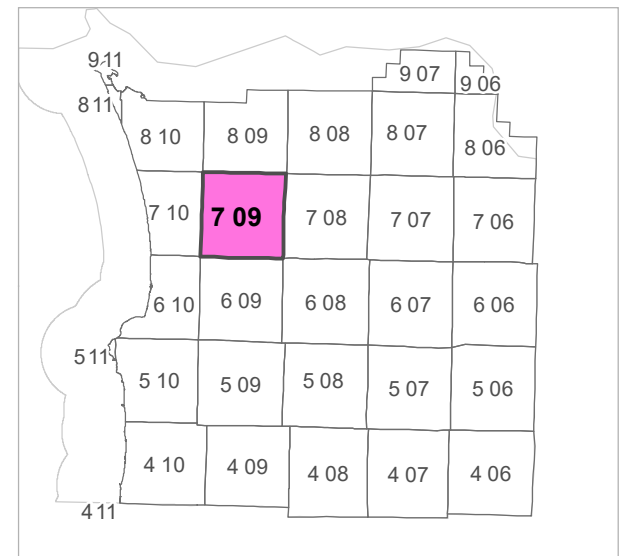


7 09 13
CLATSOP COUNTY
 SECTION 13 T7N R9W WM



Scale 1:4,800



CANCELLED TAXLOT NUMBERS

101	104	801M1	1002
103	402	900	1200



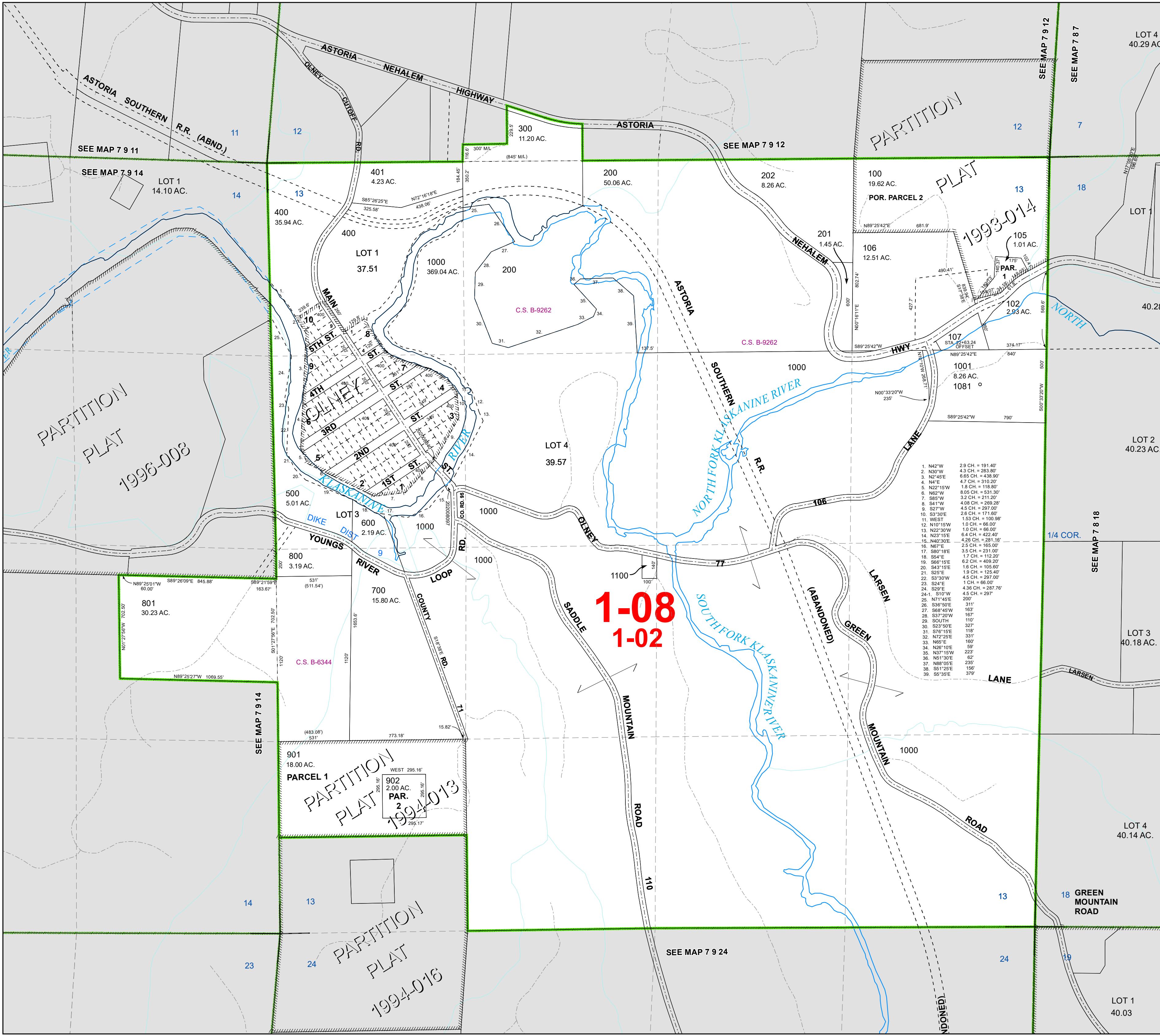
FOR ADDITIONAL MAPS VISIT OUR WEBSITE AT
www.co.clatsop.or.us

This map was produced using Clatsop County GIS data. The data is maintained by Clatsop County to support its governmental activities. Clatsop County is not responsible for any map errors, possible misuse, or misinterpretation.



PLOT DATE: 4/21/2022

7 09 13



1-08
1-02

- 1. N42°W 2.9 CH. = 191.40'
- 2. N30°W 4.3 CH. = 283.80'
- 3. N24°E 6.85 CH. = 438.90'
- 4. N4°E 4.7 CH. = 310.20'
- 5. N22°15'W 1.8 CH. = 118.80'
- 6. N82°W 8.05 CH. = 531.30'
- 7. S85°W 3.2 CH. = 211.20'
- 8. S41°W 4.68 CH. = 299.28'
- 9. S27°W 4.5 CH. = 297.00'
- 10. S3°30'E 2.6 CH. = 171.60'
- 11. WEST 1.53 CH. = 100.98'
- 12. N10°15'W 1.0 CH. = 66.00'
- 13. N22°30'W 1.0 CH. = 66.00'
- 14. N23°15'E 6.4 CH. = 422.40'
- 15. N40°30'E 4.26 CH. = 281.16'
- 16. N67°E 2.5 CH. = 165.00'
- 17. S80°18'E 3.5 CH. = 231.00'
- 18. S54°E 1.7 CH. = 112.20'
- 19. S66°15'E 6.2 CH. = 408.20'
- 20. S43°15'E 1.8 CH. = 105.60'
- 21. S25°E 1.9 CH. = 125.40'
- 22. S3°30'W 4.5 CH. = 297.00'
- 23. S24°E 1 CH. = 66.00'
- 24. S29°E 4.36 CH. = 287.76'
- 24-1. S10°W 4.5 CH. = 297.00'
- 25. N71°45'E 200'
- 26. S36°50'E 311'
- 27. S68°45'W 163'
- 28. S37°20'W 167'
- 29. SOUTH 110'
- 30. S23°50'E 327'
- 31. S76°15'E 118'
- 32. N72°25'E 331'
- 33. N65°E 160'
- 34. N26°10'E 59'
- 35. N57°15'W 223'
- 36. N51°30'E 62'
- 37. N88°05'E 235'
- 38. S61°25'E 156'
- 39. S5°35'E 379'