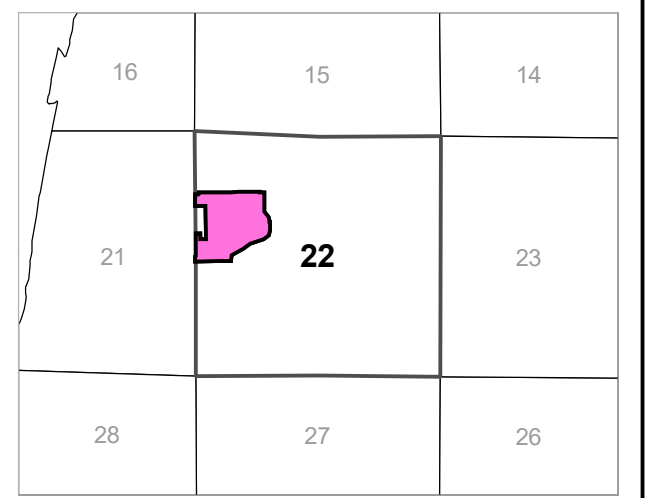
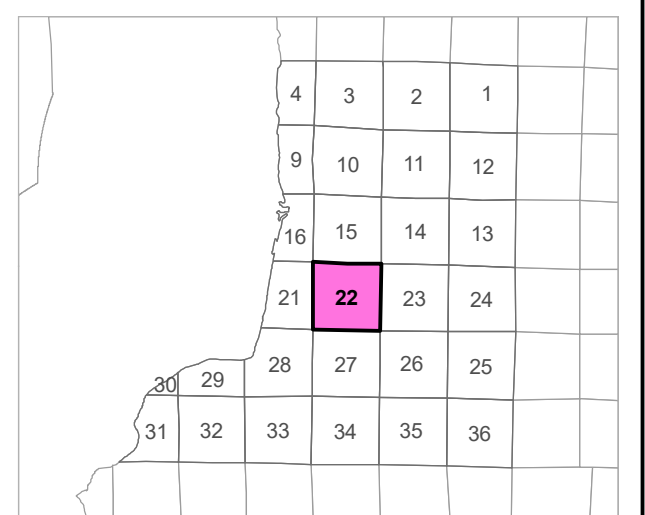
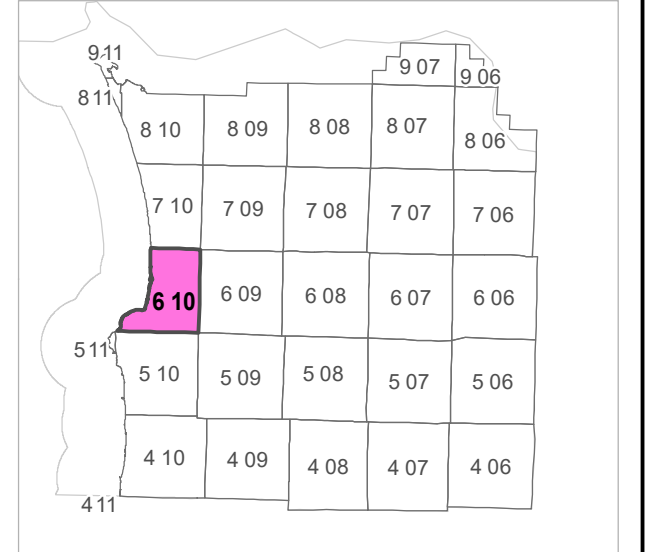
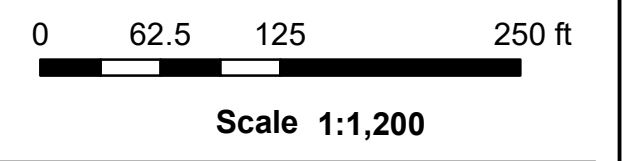
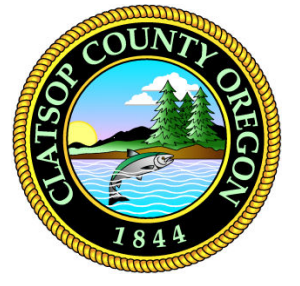


**6 10 22 BC**  
**CLATSOP COUNTY**  
 SW 1/4 NW 1/4 SEC.22 T6N R10W WM



**CANCELLED TAXLOT NUMBERS**

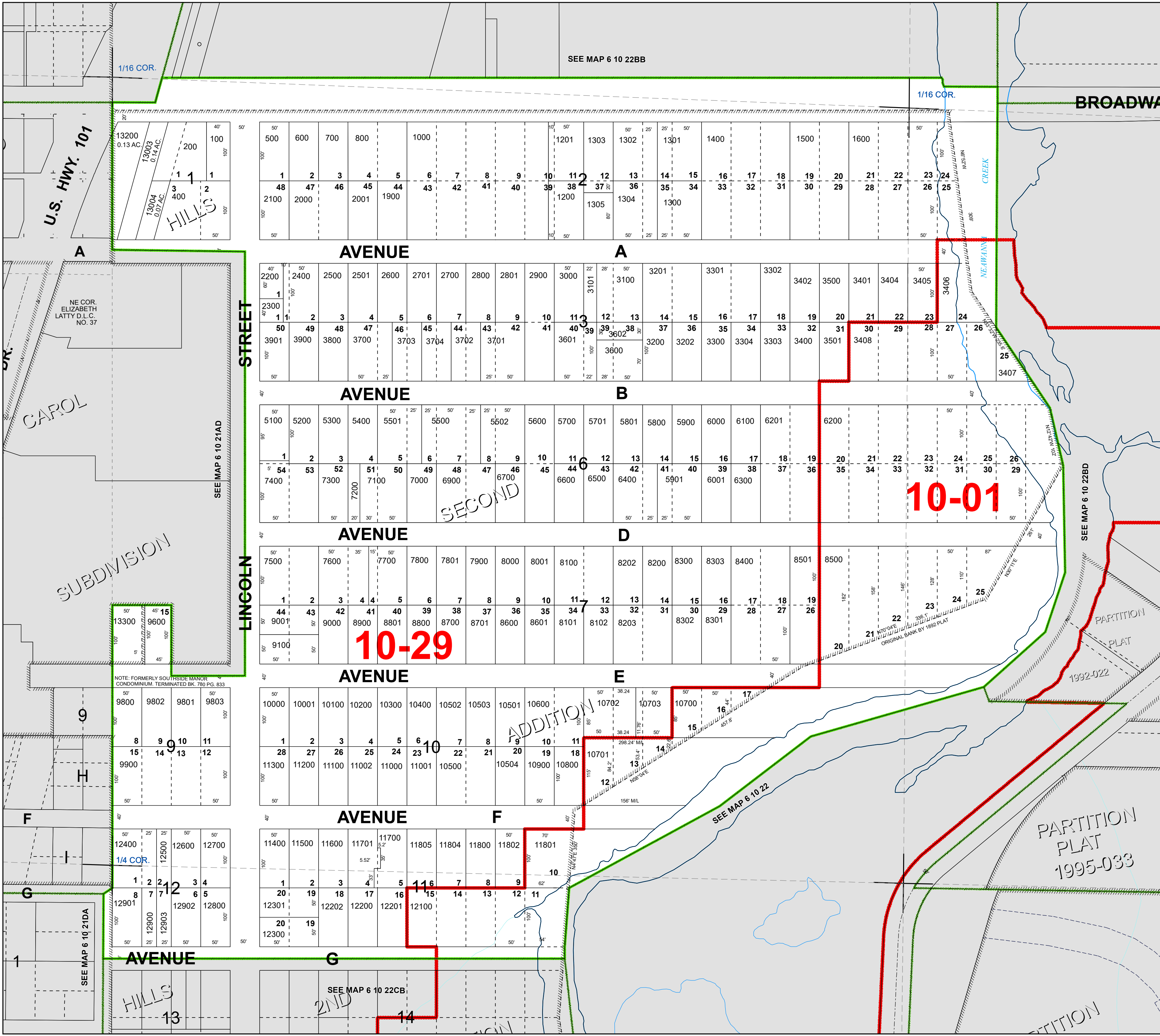
201	3403	4900	9300	13001
300	4000	4901	9400	13003M1
900	4100	5000	9500	13004M1
1100	4200	5104	9601	90101
1101	4300	5213	9700	90102
1280	4400	6800	11803	90201
1280A1	4500	7201	11900	90202
1480	4600	8201	12000	
1700	4700	9200	12501	
1800	4800	9201	13000	



FOR ADDITIONAL MAPS VISIT OUR WEBSITE AT  
[www.co.clatsop.or.us](http://www.co.clatsop.or.us)

This map was produced using Clatsop County GIS data. The data is maintained by Clatsop County to support its governmental activities. Clatsop County is not responsible for any map errors, possible misuse, or misinterpretation.

PLOT DATE: 4/27/2022  
**6 10 22 BC**



**10-29**

**10-01**

SEE MAP 6 10 22CB

SEE MAP 6 10 22

SEE MAP 6 10 22BD

SEE MAP 6 10 21AD

SEE MAP 6 10 21DA

SEE MAP 6 10 22BB

1/16 COR.

1/16 COR.

13200  
0.13 AC.

13003  
0.14 AC.

13004  
0.07 AC.

HILLS

U.S. HWY. 101

AVENUE A

AVENUE A

AVENUE B

AVENUE B

AVENUE D

AVENUE D

AVENUE E

AVENUE E

AVENUE F

AVENUE F

AVENUE G

AVENUE G

HILLS

HILLS

SECOND

ADDITION

PARTITION PLAT 1995-033

1992-022

ORIGINAL BANK BY 1892 PLAT

PARTITION PLAT

NOTE: FORMERLY SOUTHSIDE MANOR CONDOMINIUM. TERMINATED BK. 780 PG. 833

1/4 COR.

13

2ND

14

PARTITION

