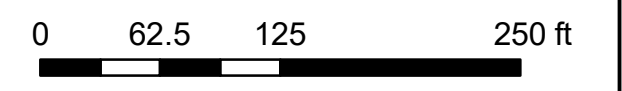
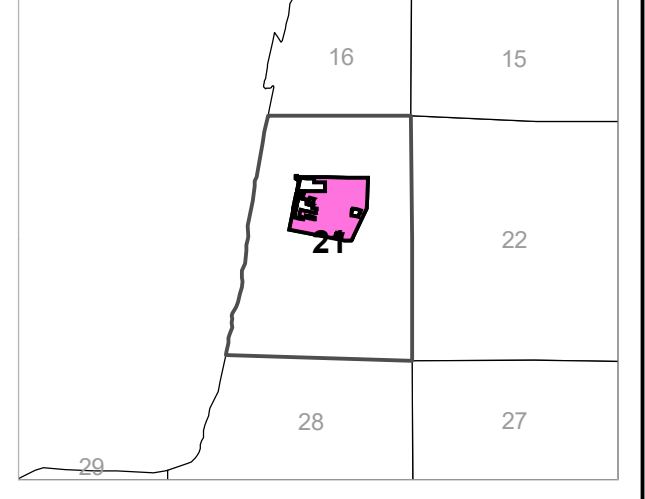
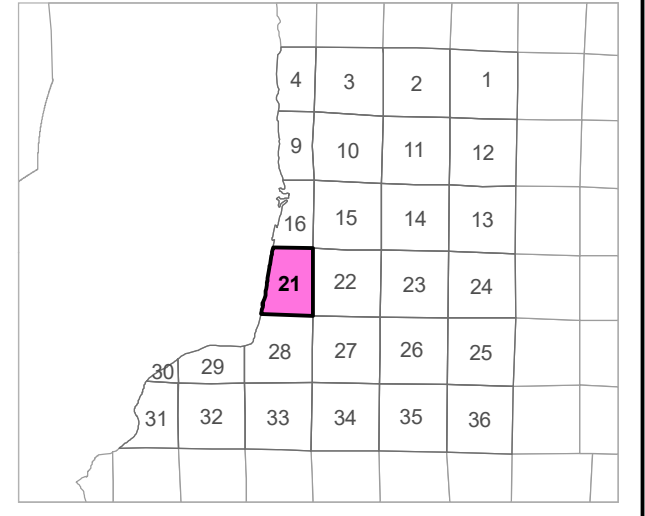
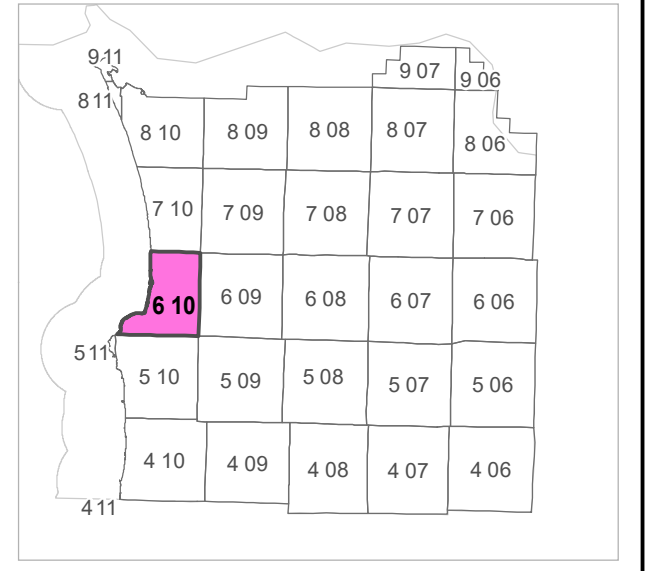


**6 10 21 AC**  
**CLATSOP COUNTY**  
 SW 1/4 NE 1/4 SEC.21 T6N R10W WM



Scale 1:1,200



**CANCELLED TAXLOT NUMBERS**

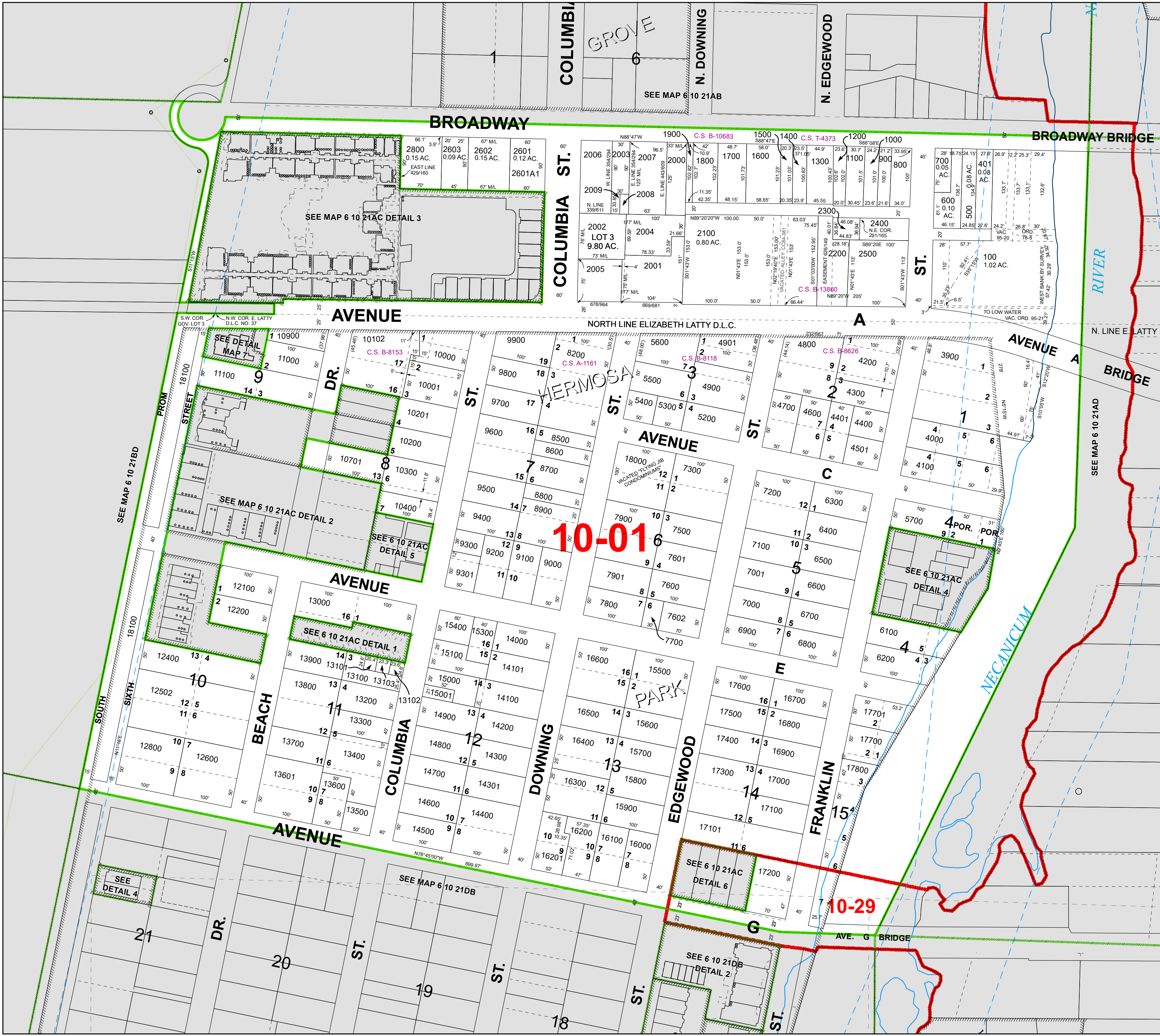
101	2700	3601	9880	12700
200	2800A1	3700	10100	12900
201	2800A2	3701	10101	13001
300	2900	3702	10600	13801
400	2900A1	3800	10700	15200
2000A1	3000	4500	11200	16301
2000A2	3100	5000	11300	17801
2006A1	3200	5100	11400	17900
2010	3201	5801	11500	17901
2011	3202	5900	11600	50000
2201	3203	5901	11700	50001
2600	3204	6000	11800	50002
2600A2	3300	7400	11900	50003
2600A3	3400	8000	12300	50004
2604	3500	8100	12500	
2605	3600	8300	12501	



FOR ADDITIONAL MAPS VISIT OUR WEBSITE AT  
[www.clatsopcounty.gov](http://www.clatsopcounty.gov)

This map was produced using Clatsop County GIS data. The data is maintained by Clatsop County to support its governmental activities. Clatsop County is not responsible for any map errors, possible misuse, or misinterpretation.

PLOT DATE: 5/14/2024  
**6 10 21 AC**



SEE MAP 6 10 21BD

SEE MAP 6 10 21AC DETAIL 3

SEE DETAIL MAP 7

SEE MAP 6 10 21AC DETAIL 2

SEE 6 10 21AC DETAIL 5

SEE 6 10 21AC DETAIL 1

SEE 6 10 21AC DETAIL 4

SEE 6 10 21AC DETAIL 6

SEE 6 10 21DB DETAIL 2

SEE DETAIL 4

SEE MAP 6 10 21DB

SEE MAP 6 10 21AB

SEE MAP 6 10 21AD

**10-016**

**10-29**