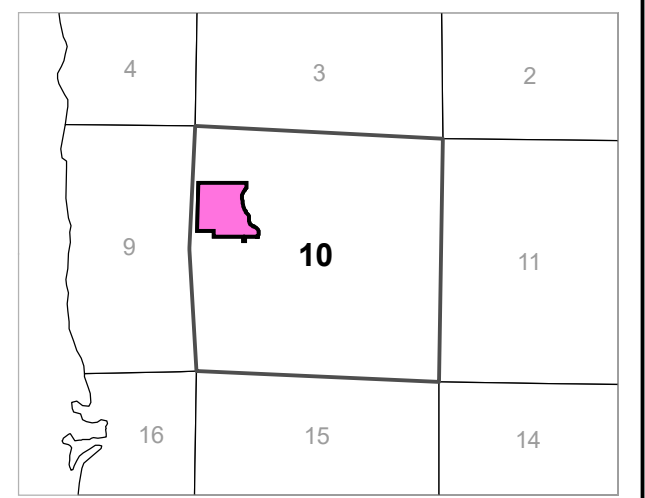
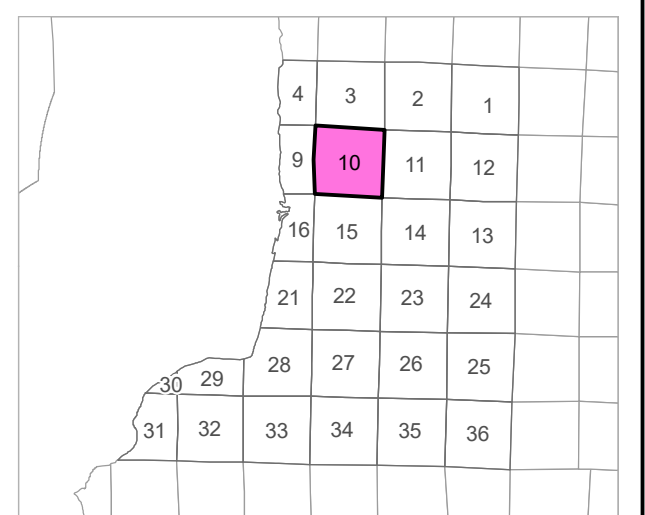
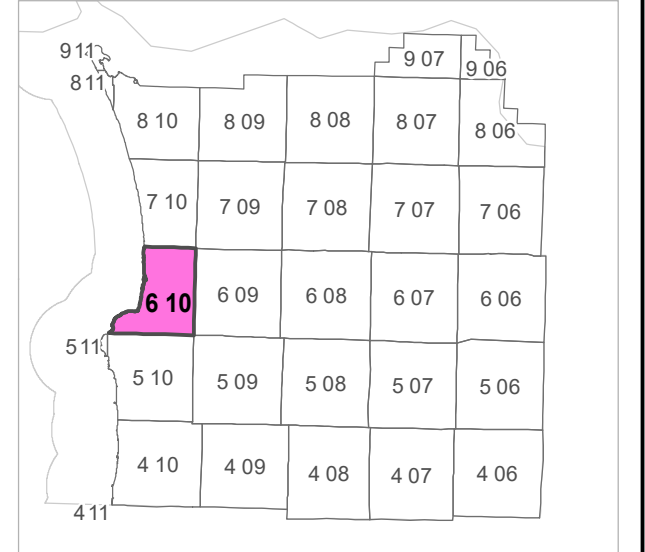


6 10 10 BC
CLATSOP COUNTY
 SW 1/4 NW 1/4 SEC.10 T6N R10W WM

0 62.5 125 250 ft

Scale 1:1,200



CANCELLED TAXLOT NUMBERS

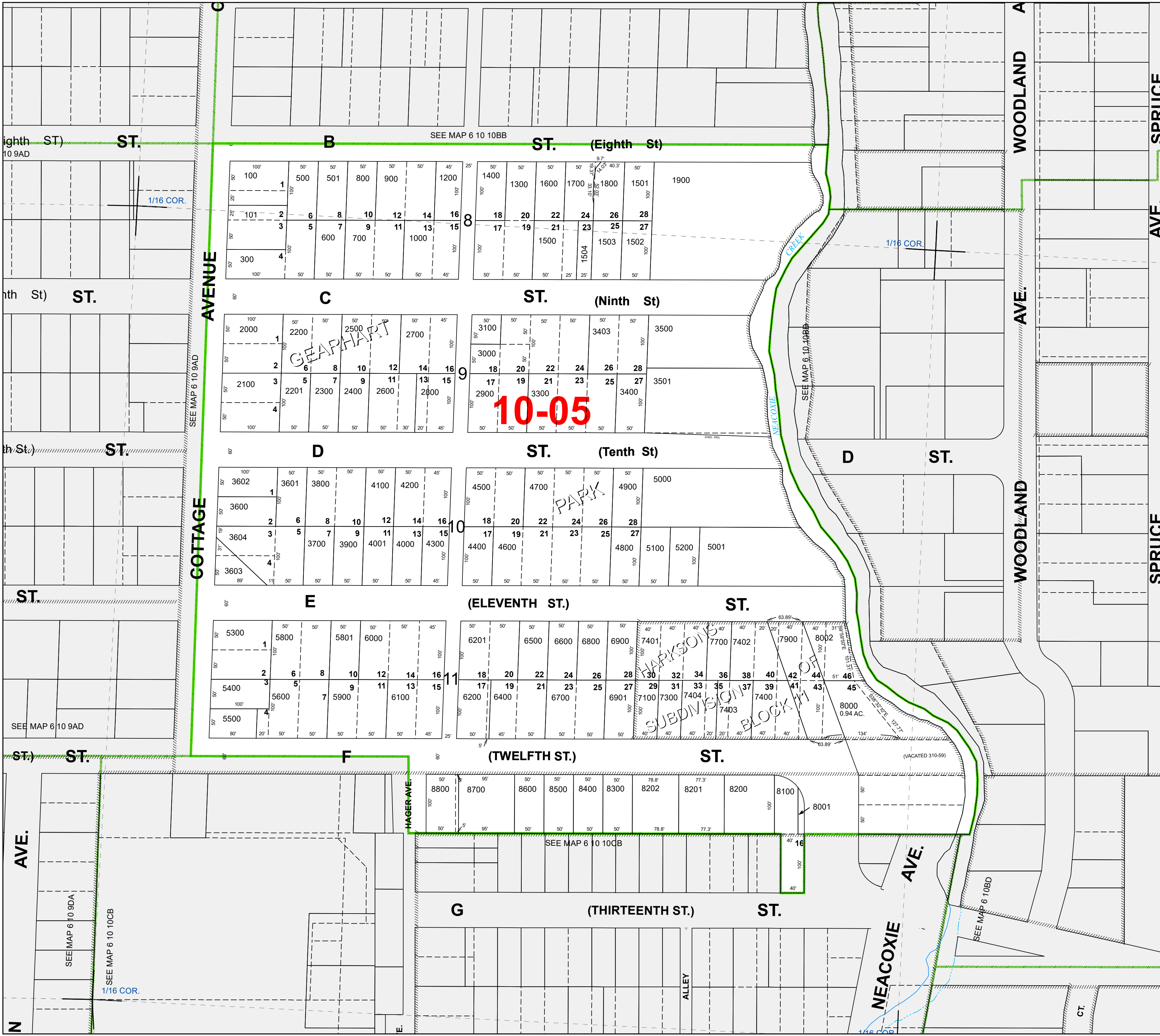
200	1801	6300	7600	8005
400	2601	6401	7800	8101
900	3200	6402	7901	
1100	3401	7000	7991	
1401	3402	7200	8003	
1701	5700	7500	8004	



FOR ADDITIONAL MAPS VISIT OUR WEBSITE AT
www.co.clatsop.or.us

This map was produced using Clatsop County GIS data. The data is maintained by Clatsop County to support its governmental activities. Clatsop County is not responsible for any map errors, possible misuse, or misinterpretation.

PLOT DATE: 6/22/2020
6 10 10 BC



ighth St) ST.
10 9AD

nth St) ST.

th St) ST.

ST.

SEE MAP 6 10 9AD

ST.) ST.

AVE.

SEE MAP 6 10 9DA
 SEE MAP 6 10 10CB
 1/16 COR.

N

SEE MAP 6 10 10BB ST. (Eighth St)

ST. (Ninth St)

ST. (Tenth St)

(ELEVENTH ST.) ST.

(TWELFTH ST.) ST.

(THIRTEENTH ST.) ST.

SEE MAP 6 10 10DB
 ALLEY
 NEACOXIE AVE.
 SEE MAP 6 10BD

E

10-05

GEAPHART

PARK

HARKSON'S
 SUBDIVISION
 BLOCK 11

SEE MAP 6 10 10CB

SEE MAP 6 10BD

1/16 COR.

1/16 COR.

(VACATED 310-59)

SEE MAP 6 10BD

CT.