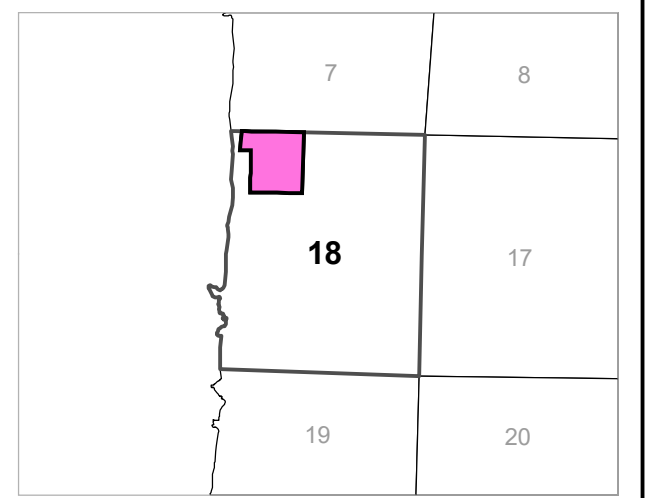
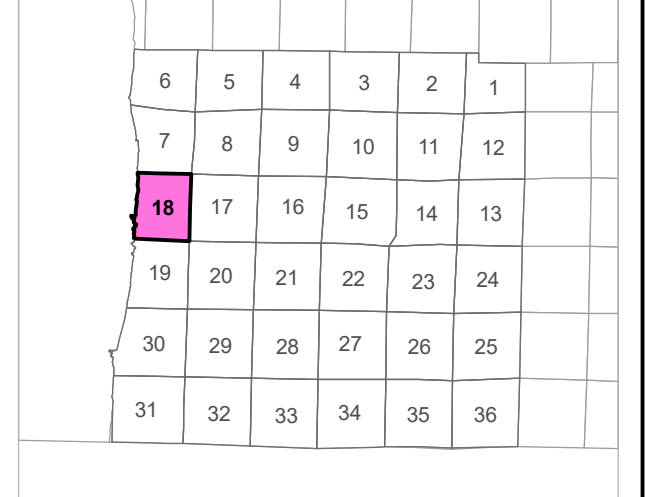
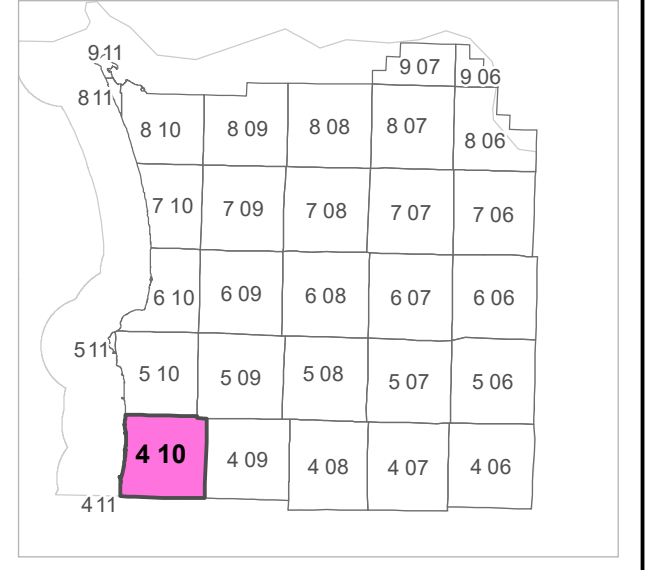
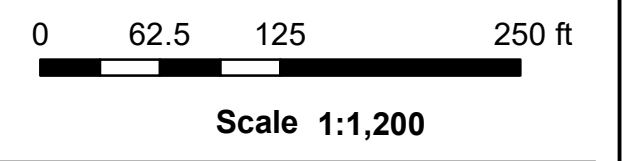


4 10 18 BA
CLATSOP COUNTY
NE 1/4 NW 1/4 SEC.18 T4N R10W WM



CANCELLED TAXLOT NUMBERS

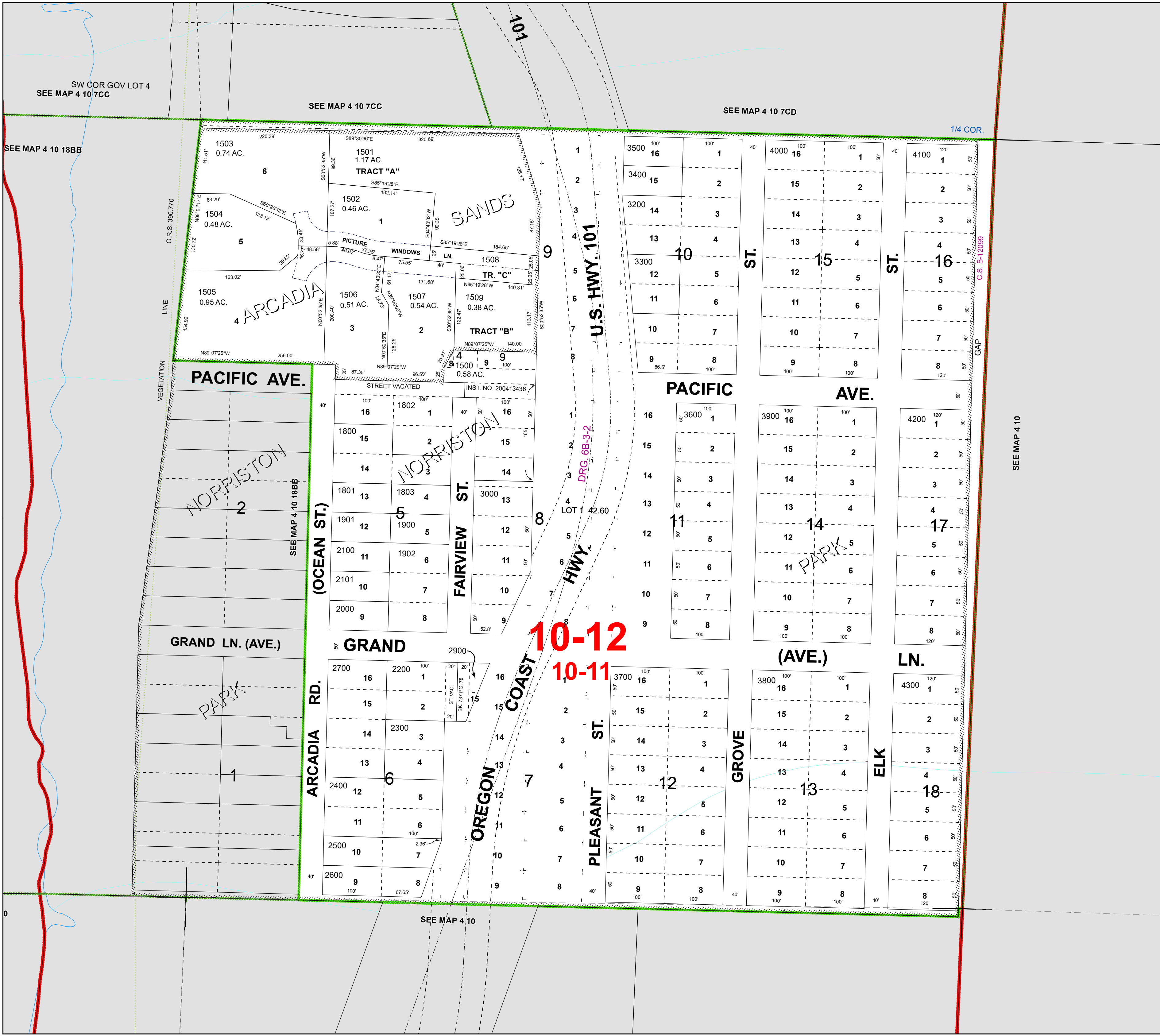
100	503	803L	1101	1400
200	600	900	1102	1600
300	601	901	1103	1700
400	700	990	1104	3001
500	701	1000	1105	3100
501	800	1001	1200	
502	801	1100	1300	



FOR ADDITIONAL MAPS VISIT OUR WEBSITE AT
www.co.clatsop.or.us

This map was produced using Clatsop County GIS data. The data is maintained by Clatsop County to support its governmental activities. Clatsop County is not responsible for any map errors, possible misuse, or misinterpretation.

PLOT DATE: 5/31/2022
4 10 18 BA



10-12
10-11

SEE MAP 4 10

SEE MAP 4 10 7CC

SEE MAP 4 10 7CD

SEE MAP 4 10 18BB

SEE MAP 4 10

SW COR GOV LOT 4
SEE MAP 4 10 7CC

O.R.S. 390.770
VEGETATION LINE

TRACT "A"
TRACT "B"
TRACT "C"

PACIFIC AVE.

NORRISTON

(OCEAN ST.)

GRAND LN. (AVE.)

ARCADIA RD.

GRAND

OREGON COAST HWY

U.S. HWY. 101

DRG. 6B-3-2

HWY

PLEASANT ST.

GROVE

(AVE.)

ELK

1/4 COR.

G.S. B-12099

GAP

0